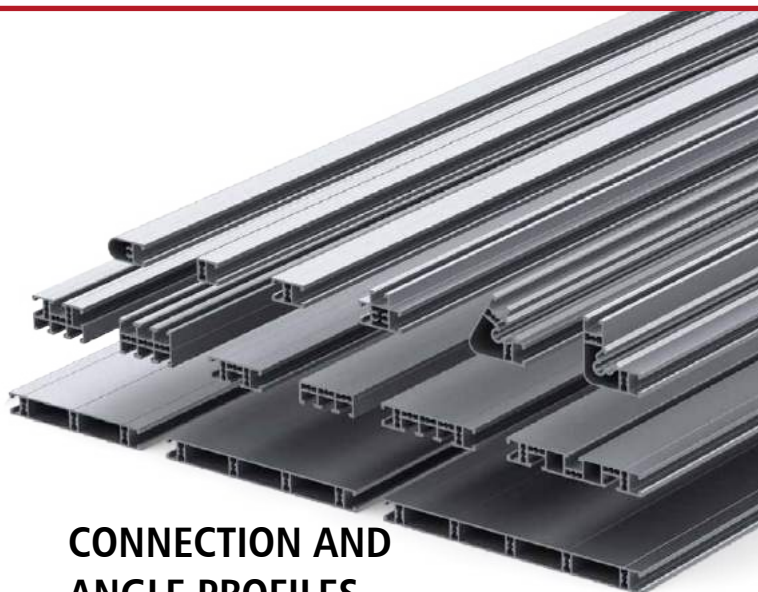




isel[®] *From Components to Systems*

ALU-T-PROFILES with ACCESSORIES



**CONNECTION AND
ANGLE PROFILES**



**FRAME AND
RECTANGULAR PROFILES**



**HOLLOW- AND
STAND PROFILES**



**CLAMPING AND
MOUNTING PROFILES**



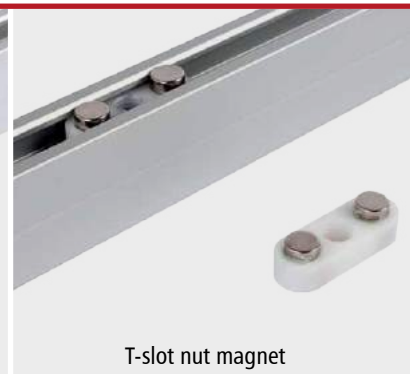
Clamping connector SV2



Angle connector WV 1



Angle connector WV 2



T-slot nut magnet

...for best quality and price...



36132 EITERFELD HESS



Im Leibolzgraben 16

Land area ca. 52.000 m²

Effective area ca. 16.100 m²

Phone +49 (0) 6672-898-228

Monday - Thursday 08:00 - 15:45 Uhr

Friday 08:00 - 14:00 Uhr

36124 EICHENZELL HESS



Bürgermeister-Ebert-Straße 40

Land area ca. 30.000 m²

Effective area ca. 11.900 m²

Phone +49 (0) 6659-981-700

Monday - Thursday 07:30 - 16:30 Uhr

Friday 07:30 - 14:00 Uhr

D-36466 DERMBACH THURINGIA



Untere Röde 2

Land area ca. 35.600 m²

Effective area ca. 16.300 m²

Phone +49 (0) 36964-84-500

Monday - Thursday 07:30 - 16:30 Uhr

Friday 07:30 - 14:00 Uhr

D-13627 BERLIN



Adam-von-Trott-Straße 6/8

Land area ca. 21.800 m²

Effective area ca. 17.900 m²

Phone +49 (0) 30 34099-134

Monday - Thursday 07:30 - 16:30 Uhr

Friday 07:30 - 14:00 Uhr

HISTORY

The **isel-group** was founded in **1972** in Eiterfeld under the name ISERT-Elektronik as a one-man company. The company objectives during the initial years were the production and sales of systems and components based on

– printed circuit board production –

From these modest beginnings the **isel-group** has developed into a manufacturer and provider of electronics, software, automation systems, point of purchase display accessories and lifestyle consumer goods. The basis for all of our products and developments has been and continues to be innovative product design, efficient production and patented innovations.

Currently, the **isel-group** has 4 plant locations in Germany with a total of over 1,500,000 sq ft and several sales offices around the world.

From our modest beginnings we are a vertically integrated company with manufacturing plants for production and quality control, offices, warehouses and shipping facilities. The growth and success of the **isel-group** was and is based on the motivated, well-educated and experienced staff.

Besides salary and wages, we show our appreciation to our staff with our own **company pension VIU**, as well as additional bonuses based on our success.

PROGRAM

- spindle and linear drives
- machine and vehicle parts
- aluminum profiles and frames
- linear guides and rotating devices
- CNC machines and systems
- laser and water jet cutting
- automation and logistics
- handling and robotics
- motor control units and sensors
- enclosures and control panels
- stepper and servo motors
- linear and torque motors
- promotion and sales
- scanners and digitalisier
- led- and laser applications
- video- and audio-exponates
- CAD/CAM and CNC programs
- PLC and network applications
- digitalisation and scan software
- operation and control applications
- factory and office equipment
- e-mobiles and e-scooters
- health care and wellness
- solar and wind energy



You can use our 3D CAD models
and 2D drawings on Traceparts

www.tracepartsonline.net

PHILOSOPHY

The **isel-group** with over 40 years of experience and competence, stands for competitive products and solutions in the areas of mechanics, electronics, software, systems, display and lifestyle because of:

- innovation and creativity
- quality and functionality
- efficiency and modularity
- price and performance

The main objectives of the **isel-group** are the development, production, sales and service of components and systems with intelligent motion control and automation.

The **isel-group** is an international combine of companies and investments targeting the capital equipment and consumables market with high value added products and vertical integration. We face the global challenges of the market and competition under the slogan

**From Components to Systems
made by isel & made for isel**

The **isel-group** is committed to a humane and peaceful cooperation of all people together and with each other as well as liberal and humane working conditions regardless of race, color, religion, sex or national origin.



www.isel.com





Connection and angle profiles

- Aluminium T-profiles naturally anodised, length 6 m
- T-slot and hollow indentions for nuts and bolts
- chipless compound of blanks with quick connectors
- fitting plate material like perforated plates mirror glass, acrylic, PVC and web plates

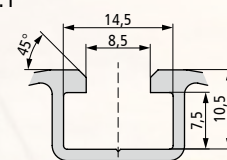
Frame and rectangular profiles

- Aluminium T-profiles naturally anodised, length 6 m
- angle connections with miter for frame and display application
- T-slots suitable for LED strip and plate fastening 1 to 8 mm
- Die cast aluminium feet and castors for mobile use and Slot covers in different colors

Options

- Cuts and coatings on request.

Dimension drawing T-slot 1:1



Hollow and stand profiles

- Aluminium T-profiles naturally anodised, length 6 m (7.6 m)
- Suitable design for stands and trade fair structures with angle connectors
- Fastening elements for advertising banners, lighting and boards
- Adjustable feet and rollers for different floors, slot nuts and bolts up to M8 threads

Clamping and mounting profiles

- Aluminium T-profiles naturally anodised, length 3 m and 6 m
- Single-sided and double-sided T-slots with 25 and 50 mm raster
- Clamping plates for machines, tables and linear guides
- Slot nuts and threaded inserts for M4 to M8

INHALT

isel-Group in Germany	2
isel-group History, Philosophy, Program	3
Alu-T-Profiles	4 - 5
Connection and angle profiles	6 - 11
Frame and rectangular profiles	12 - 14
Frame and stand profiles	15
Hollow- and stand profiles	16 - 19
Clamping and mounting profiles	20 - 21
Special offers and special profiles	22
Special profiles and accessories	23
Accessories for aluminium T-profiles	24 - 33
Acrylic, multi-skin and foam sheets	34
Stainless steel handles	35
Frame feet and castors	36 - 37
Monitor brackets	38 - 39
Product examples	40 - 41
Index	42





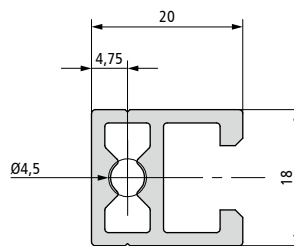
PV 20



Weight	0.42 kg/m	Moment of inertia I _x	0.60 cm ⁴
Part no. 6 m	201046 6000	Moment of inertia I _y	0.62 cm ⁴
		Moment of resistance W _x	0.67 cm ³
		Moment of resistance W _y	0.54 cm ³

- Aluminium, naturally anodised
- 1 T-slot insert for slot nuts
- 1 hollow insert for M5/M6 screws
- Standard length: 6000 mm

Profile cover for PV 20
RAL 7012 / Basalt grey
Part no.: 209001 0107
10 units

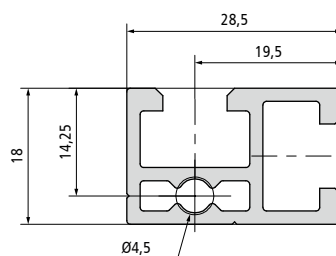


PV 28



Weight	0.51 kg/m	Moment of inertia I _x	0.74 cm ⁴
Part no. 6 m	201115 6000	Moment of inertia I _y	1.54 cm ⁴
		Moment of resistance W _x	0.72 cm ³
		Moment of resistance W _y	1.02 cm ³

- Aluminium, naturally anodised
- 2 T-slot inserts for slot nuts
- 1 hollow insert for M5/M6 screws
- Standard length: 6000 mm



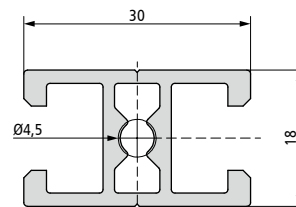
PV 30



Weight	0.55 kg/m	Moment of inertia I _x	0.90 cm ⁴
Part no. 6 m	201047 6000	Moment of inertia I _y	1.47 cm ⁴
		Moment of resistance W _x	1.00 cm ³
		Moment of resistance W _y	0.98 cm ³

- Aluminium, naturally anodised
- 2 T-slot inserts for slot nuts
- 1 hollow insert for M5/M6 screws
- Standard length: 6000 mm

Profile cover for PV 30
RAL 7012 / Basalt grey
Part no.: 209001 0108
10 units

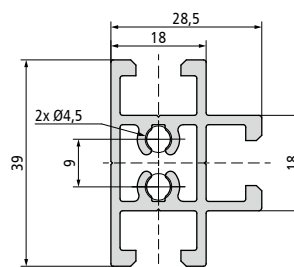


PV 29



Weight	0.87 kg/m	Moment of inertia I _x	3.57 cm ⁴
Part no. 6 m	201078 6000	Moment of inertia I _y	2.26 cm ⁴
		Moment of resistance W _x	1.83 cm ³
		Moment of resistance W _y	1.34 cm ³

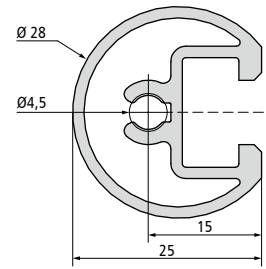
- Aluminium, naturally anodised
- 3 T-slot inserts for slot nuts
- 2 hollow inserts for M5/M6 screws
- Standard length: 6000 mm



PV 25



Weight	0.54 kg/m	Moment of inertia I _x	1.01 cm ⁴
Part no. 6 m	201048 6000	Moment of inertia I _y	1.37 cm ⁴
		Moment of resistance W _x	0.72 cm ³
		Moment of resistance W _y	1.02 cm ³



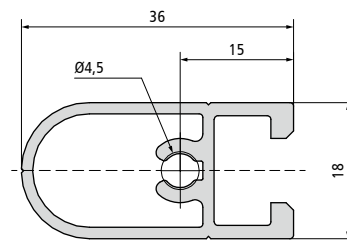
- Aluminium, naturally anodised
- 1 T-slot insert for slot nuts
- 1 hollow insert for M5/M6 screws
- Standard length: 6000 mm

Profile cover for PV 25
RAL 7012 / Basalt grey
Part no.: 209001 0095
10 units

PV 36



Weight	0.52 kg/m	Moment of inertia I _x	0.84 cm ⁴
Part no. 6 m	201049 6000	Moment of inertia I _y	2.08 cm ⁴
		Moment of resistance W _x	0.93 cm ³
		Moment of resistance W _y	1.04 cm ³



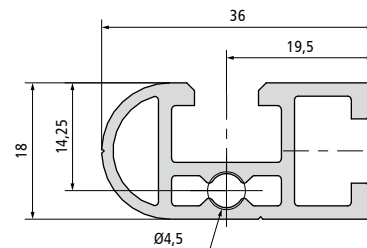
- Aluminium, naturally anodised
- 1 T-slot insert for slot nuts
- 1 hollow insert for M5/M6 screws
- Standard length: 6000 mm

Profile cover for PV 36
RAL 7012 / Basalt grey
Part no.: 209001 0096
10 units

PV 36-2



Weight	0.61 kg/m	Moment of inertia I _x	0.86 cm ⁴
Part no. 6 m	201116 6000	Moment of inertia I _y	2.46 cm ⁴
		Moment of resistance W _x	0.88 cm ³
		Moment of resistance W _y	1.36 cm ³

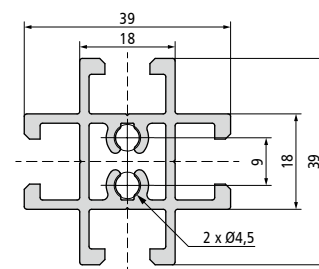


- Aluminium, naturally anodised
- 2 T-slot inserts for slot nuts
- 1 hollow insert for M5/M6 screws
- Standard length: 6000 mm

PV 39



Weight	1.0 kg/m	Moment of inertia I _x	3.89 cm ⁴
Part no. 6 m	201094 6000	Moment of inertia I _y	3.85 cm ⁴
		Moment of resistance W _x	1.99 cm ³
		Moment of resistance W _y	1.97 cm ³



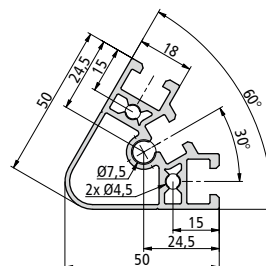
- Aluminium, naturally anodised
- 4 T-slot inserts for slot nuts
- 2 hollow inserts for M5/M6 screws
- Standard length: 6000 mm



PW 50-60



Weight	1.25 kg/m	Moment of inertia I _x	6.85 cm ⁴
Part no. 6 m	201108 6000	Moment of inertia I _y	8.45 cm ⁴
		Moment of resistance W _x	2.69 cm ³
		Moment of resistance W _y	2.82 cm ³

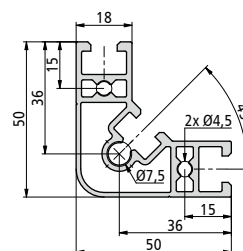


- Aluminium, naturally anodised
- 3 T-slot inserts for slot nuts
- 3 hollow inserts for M5/6/8 screws
- Standard length: 6000 mm

PW 50-90



Weight	1.35 kg/m	Moment of inertia I _x	10.7 cm ⁴
Part no. 6 m	201103 6000	Moment of inertia I _y	10.7 cm ⁴
		Moment of resistance W _x	2.74 cm ³
		Moment of resistance W _y	2.74 cm ³

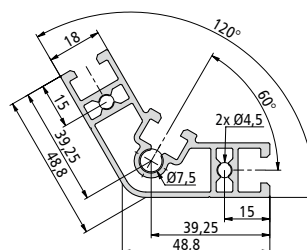


- Aluminium, naturally anodised
- 3 T-slot inserts for slot nuts
- 3 hollow inserts for M5/6/8 screws
- Standard length: 6000 mm

PW 50-120



Weight	1.44 kg/m	Moment of inertia I _x	8.92 cm ⁴
Part no. 6 m	201109 6000	Moment of inertia I _y	18.67 cm ⁴
		Moment of resistance W _x	2.88 cm ³
		Moment of resistance W _y	5.23 cm ³

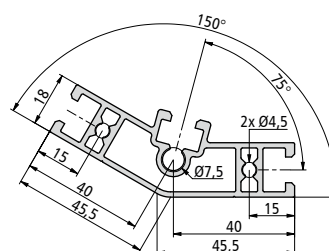


- Aluminium, naturally anodised
- 3 T-slot inserts for slot nuts
- 3 hollow inserts for M5/6/8 screws
- Standard length: 6000 mm

PW 50-150



Weight	1.44 kg/m	Moment of inertia I _x	4.76 cm ⁴
Part no. 6 m	201110 6000	Moment of inertia I _y	26.96 cm ⁴
		Moment of resistance W _x	2.20 cm ³
		Moment of resistance W _y	6.74 cm ³

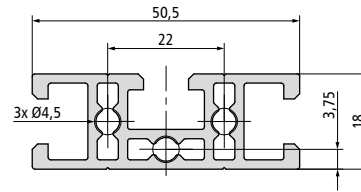


- Aluminium, naturally anodised
- 3 T-slot inserts for slot nuts
- 3 hollow inserts for M5/6/8 screws
- Standard length: 6000 mm

PV 51



Weight	0.93 kg/m	Moment of inertia I _x	1.42 cm ⁴
Part no. 6 m	201070 6000	Moment of inertia I _y	7.17 cm ⁴
		Moment of resistance W _x	1.36 cm ³
		Moment of resistance W _y	2.84 cm ³

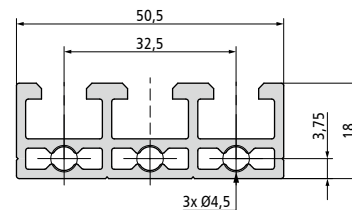


- Aluminium, naturally anodised
- 3 T-slot inserts for slot nuts
- 3 hollow inserts for M5/M6 screws
- Standard length: 6000 mm

PV 53



Weight	0.93 kg/m	Moment of inertia I _x	1.15 cm ⁴
Part no. 6 m	201051 6000	Moment of inertia I _y	8.45 cm ⁴
		Moment of resistance W _x	1.1 cm ³
		Moment of resistance W _y	3.35 cm ³

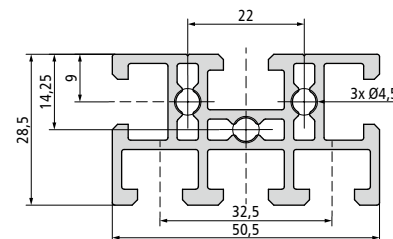


- Aluminium, naturally anodised
- 3 T-slot inserts for slot nuts
- 3 hollow inserts for M5/M6 screws
- Standard length: 6000 mm

PV 54

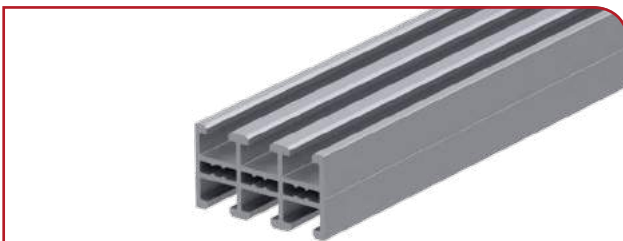


Weight	1.27 kg/m	Moment of inertia I _x	3.67 cm ⁴
Part no. 6 m	201052 6000	Moment of inertia I _y	10.68 cm ⁴
		Moment of resistance W _x	2.45 cm ³
		Moment of resistance W _y	4.23 cm ³

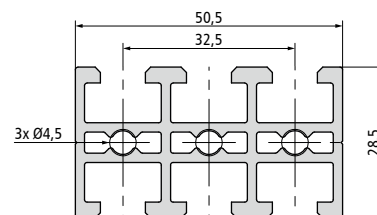


- Aluminium, naturally anodised
- 6 T-slot inserts for slot nuts
- 3 hollow inserts for M5/M6 screws
- Standard length: 6000 mm

PV 56



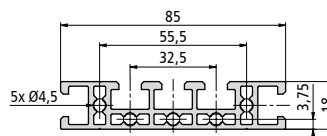
Weight	1.27 kg/m	Moment of inertia I _x	3.14 cm ⁴
Part no. 6 m	201053 6000	Moment of inertia I _y	11.97 cm ⁴
		Moment of resistance W _x	2.2 cm ³
		Moment of resistance W _y	4.74 cm ³



- Aluminium, naturally anodised
- 6 T-slot inserts for slot nuts
- 3 hollow inserts for M5/M6 screws
- Standard length: 6000 mm



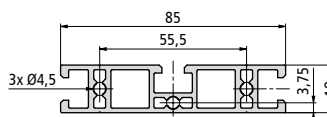
PV 85-1



Weight	1.58 kg/m	Moment of inertia I _x	2.22 cm ⁴
Part no. 6 m	201081 6000	Moment of inertia I _y	35.74 cm ⁴
		Moment of resistance W _x	2.25 cm ³
		Moment of resistance W _y	8.41 cm ³

- Aluminium, naturally anodised
- 5 T-slot inserts for slot nuts
- 5 hollow inserts for M5/M6 screws
- Standard length: 6000 mm

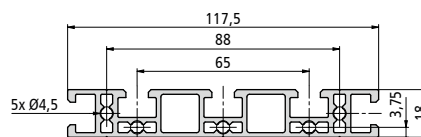
PV 85-2



Weight	1.45 kg/m	Moment of inertia I _x	2.34 cm ⁴
Part no. 6 m	201082 6000	Moment of inertia I _y	34.41 cm ⁴
		Moment of resistance W _x	2.51 cm ³
		Moment of resistance W _y	8.10 cm ³

- Aluminium, naturally anodised
- 3 T-slot inserts for slot nuts
- 3 hollow inserts for screws
- Standard length: 6000 mm

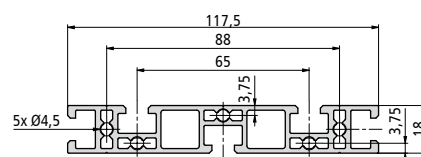
PV 120-1



Weight	2.02 kg/m	Moment of inertia I _x	3.08 cm ⁴
Part no. 6 m	201083 6000	Moment of inertia I _y	92.79 cm ⁴
		Moment of resistance W _x	3.18 cm ³
		Moment of resistance W _y	15.79 cm ³

- Aluminium, naturally anodised
- 5 T-slot inserts for slot nuts
- 5 hollow inserts for screws
- Standard length: 6000 mm

PV 120-2



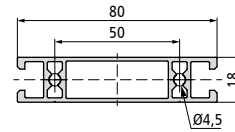
Weight	2.02 kg/m	Moment of inertia I _x	3.11 cm ⁴
Part no. 6 m	201084 6000	Moment of inertia I _y	92.79 cm ⁴
		Moment of resistance W _x	3.18 cm ³
		Moment of resistance W _y	15.75 cm ³

- Aluminium, naturally anodised
- 5 T-slot inserts for slot nuts
- 5 hollow inserts for M5/M6 screws
- Standard length: 6000 mm

PV 80



Weight	1.13 kg/m	Moment of inertia I _x	2.03 cm ⁴
Part no. 6 m	201058 6000	Moment of inertia I _y	27.42 cm ⁴
		Moment of resistance W _x	2.26 cm ³
		Moment of resistance W _y	6.86 cm ³

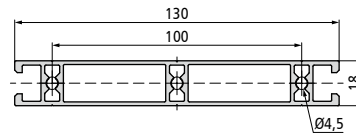


- Aluminium, naturally anodised
- 2 T-slot inserts for slot nuts
- 2 hollow inserts for M5/M6 screws
- Standard length: 6000 mm

PV 130



Weight	1.71 kg/m	Moment of inertia I _x	3.16 cm ⁴
Part no. 6 m	201059 6000	Moment of inertia I _y	105.27 cm ⁴
		Moment of resistance W _x	3.51 cm ³
		Moment of resistance W _y	16.2 cm ³

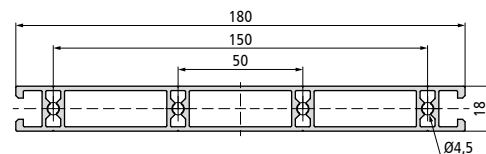


- Aluminium, naturally anodised
- 2 T-slot inserts for slot nuts
- 3 hollow inserts for M5/M6 screws
- Standard length: 6000 mm

PV 180



Weight	2.5 kg/m	Moment of inertia I _x	4.64 cm ⁴
Part no. 6 m	201060 6000	Moment of inertia I _y	274.51 cm ⁴
		Moment of resistance W _x	5.16 cm ³
		Moment of resistance W _y	30.50 cm ³

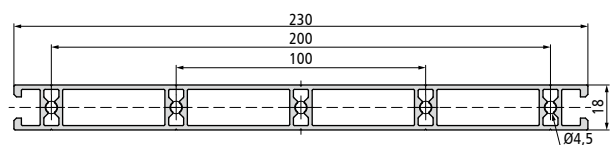


- Aluminium, naturally anodised
- 2 T-slot inserts for slot nuts
- 4 hollow inserts for M5/M6 screws
- Standard length: 6000 mm

PV 230



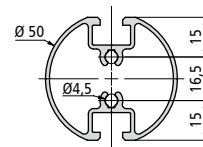
Weight	3.09 kg/m	Moment of inertia I _x	5.88 cm ⁴
Part no. 6 m	201061 6000	Moment of inertia I _y	551.16 cm ⁴
		Moment of resistance W _x	6.53 cm ³
		Moment of resistance W _y	47.93 cm ³



- Aluminium, naturally anodised
- 2 T-slot inserts for slot nuts
- 5 hollow inserts for M5/M6 screws
- Standard length: 6000 mm



PV 50-1

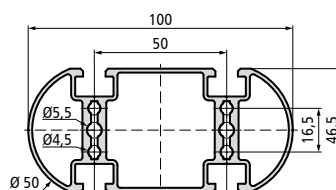


Weight	1.04 kg/m	Moment of inertia I _x	7.31 cm ⁴
Part no. 6 m	201085 6020	Moment of inertia I _y	8.83 cm ⁴
		Moment of resistance W _x	2.92 cm ³
		Moment of resistance W _y	3.79 cm ³

- Aluminium, naturally anodised
- 2 T-slot inserts for slot nuts
- 2 hollow insert for M5/M6 screws
- Standard length: 6000 mm

Profile cover for PV 50-1
RAL 7012 / Basalt grey
Part no.: on request
10 units

PV 100-2

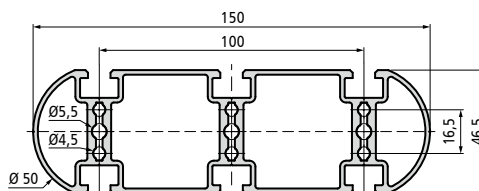
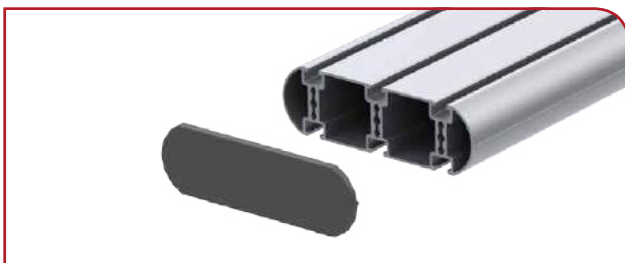


Weight	2.22 kg/m	Moment of inertia I _x	18.81 cm ⁴
Part no. /6 m	208058 6000	Moment of inertia I _y	70.93 cm ⁴
		Moment of resistance W _x	8.09 cm ³
		Moment of resistance W _y	14.19 cm ³

- Aluminium, naturally anodised
- 4 T-slot inserts for slot nuts
- 2 hollow inserts for M5/M6 screws
- Standard length: 6000 mm

Profile cover for PV 100-2
RAL 7012 / Basalt grey
Part no.: 209001 0012
10 units

PV 150-3

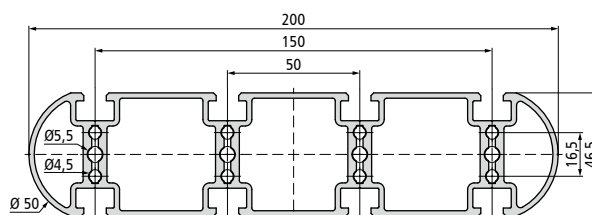
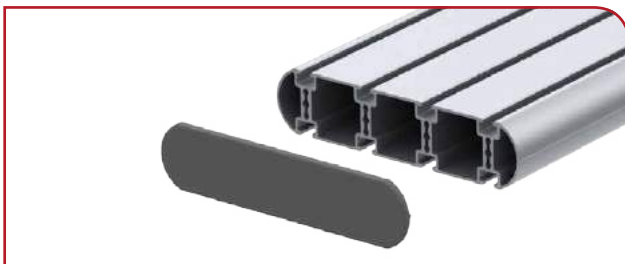


Weight	3.5 kg/m	Moment of inertia I _x	31.82 cm ⁴
Part no. 6 m	208059 6000	Moment of inertia I _y	259.99 cm ⁴
		Moment of resistance W _x	13.69 cm ³
		Moment of resistance W _y	34.66 cm ³

- Aluminium, naturally anodised
- 6 T-slot inserts for slot nuts
- 3 hollow inserts for M5/M6 screws
- Standard length: 6000 mm

Profile cover for PV 150-3
RAL 7012 / Basalt grey
Part no.: 209001 0013
10 units

PV 200-4

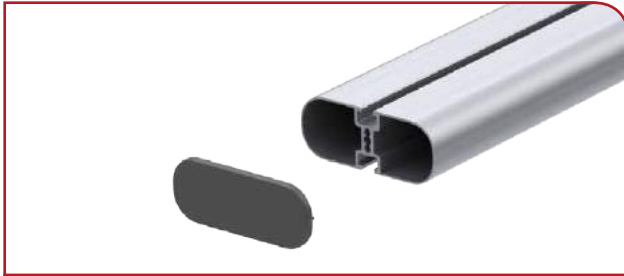


Weight	4.95 kg/m	Moment of inertia I _x	46.92 cm ⁴
Part no. 6 m	208060 6000	Moment of inertia I _y	655.4 cm ⁴
		Moment of resistance W _x	20.18 cm ³
		Moment of resistance W _y	65.54 cm ³

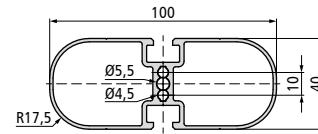
- Aluminium, naturally anodised
- 8 T-slot inserts for slot nuts
- 4 hollow inserts for M5/M6 screws
- Standard length: 6000 mm

Profile cover for PV 200-4
RAL 7012 / Basalt grey
Part no.: 209001 0014
10 units

PV 100-1



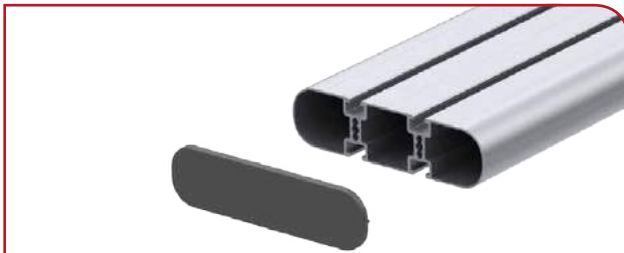
Weight	1.58 kg/m	Moment of inertia I _x	12.07 cm ⁴
Part no. 6 m	208052 6000	Moment of inertia I _y	41.12 cm ⁴
		Moment of resistance W _x	6.04 cm ³
		Moment of resistance W _y	8.22 cm ³



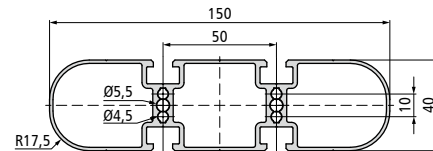
- Aluminium, naturally anodised
- 2 T-slot inserts for slot nuts
- 1 hollow insert for M5/M6 screws
- Standard length: 6000 mm

Profile cover for PV 100-1
RAL 7012 / Basalt grey
Part no.: 209001 0111
10 units

PV 150-2



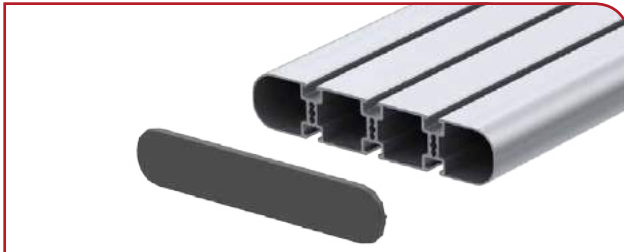
Weight	2.56 kg/m	Moment of inertia I _x	19.31 cm ⁴
Part no. 6 m	208053 6000	Moment of inertia I _y	147.47 cm ⁴
		Moment of resistance W _x	9.66 cm ³
		Moment of resistance W _y	19.66 cm ³



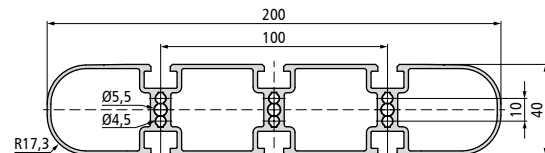
- Aluminium, naturally anodised
- 4 T-slot inserts for slot nuts
- 2 hollow inserts for M5/M6 screws
- Standard length: 6000 mm

Profile cover for PV 150-2
RAL 7012 / Basalt grey
Part no.: 209001 0234
10 units

PV 200-3



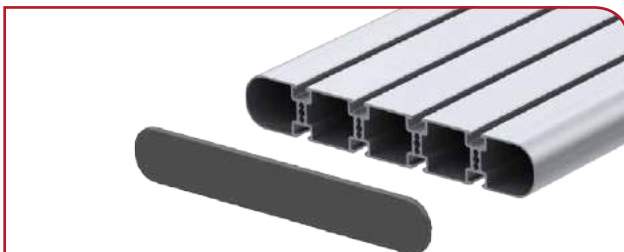
Weight	3.76 kg/m	Moment of inertia I _x	28.92 cm ⁴
Part no. 6 m	208054 6000	Moment of inertia I _y	393.67 cm ⁴
		Moment of resistance W _x	14.46 cm ³
		Moment of resistance W _y	39.37 cm ³



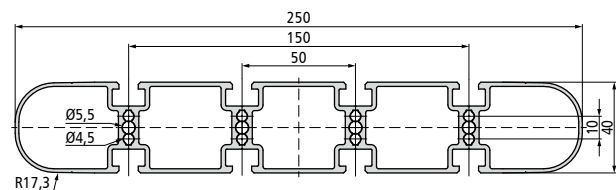
- Aluminium, naturally anodised
- 6 T-slot inserts for slot nuts
- 3 hollow inserts for M5/M6 screws
- Standard length: 6000 mm

Profile cover for PV 200-3
RAL 7012 / Basalt grey
Part no.: 209001 0235
10 units

PV 250-4



Weight	4.8 kg/m	Moment of inertia I _x	36.91 cm ⁴
Part no. 6 m	208056 6000	Moment of inertia I _y	801.16 cm ⁴
		Moment of resistance W _x	18.45 cm ³
		Moment of resistance W _y	64.09 cm ³

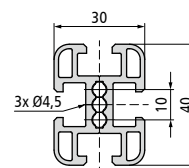


- Aluminium, naturally anodised
- 8 T-slot inserts for slot nuts
- 4 hollow inserts for M5/M6 screws
- Standard length: 6000 mm

Profile cover for PV 250-4
RAL 7012 / Basalt grey
Part no.: 209001 0110
10 units



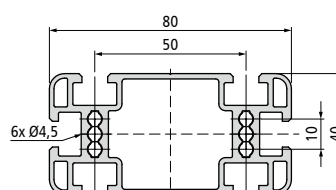
PR 30



Weight	1.15 kg/m	Moment of inertia I _x	6.02 cm ⁴
Part no. 6 m	201068 6000	Moment of inertia I _y	3.63 cm ⁴
		Moment of resistance W _x	3.01 cm ³
		Moment of resistance W _y	2.42 cm ³

- Aluminium, naturally anodised
- 4 T-slot inserts for slot nuts
- 1 hollow insert for M5/M6 screws
- Standard length: 6000 mm

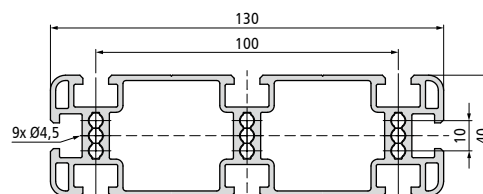
PR 80



Weight	2.23 kg/m	Moment of inertia I _x	13.65 cm ⁴
Part no. 6 m	201069 6000	Moment of inertia I _y	58.64 cm ⁴
		Moment of resistance W _x	6.83 cm ³
		Moment of resistance W _y	14.66 cm ³

- Aluminium, naturally anodised
- 6 T-slot inserts for slot nuts
- 2 hollow inserts for M5/M6 screws
- Standard length: 6000 mm

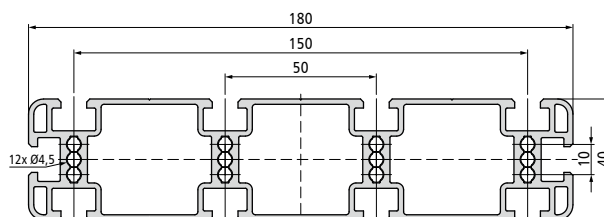
PR 130



Weight	3.15 kg/m	Moment of inertia I _x	21.55 cm ⁴
Part no. 6 m	201080 6000	Moment of inertia I _y	217.23 cm ⁴
		Moment of resistance W _x	10.78 cm ³
		Moment of resistance W _y	33.42 cm ³

- Aluminium, naturally anodised
- 8 T-slot inserts for slot nuts
- 3 hollow inserts for M5/M6 screws
- Standard length: 6000 mm

PR 180



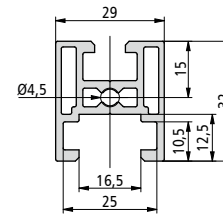
Weight	4.13 kg/m	Moment of inertia I _x	29.18 cm ⁴
Part no. 6 m	201071 6000	Moment of inertia I _y	519.93 cm ⁴
		Moment of resistance W _x	14.59 cm ³
		Moment of resistance W _y	57.77 cm ³

- Aluminium, naturally anodised
- 10 T-slot inserts for slot nuts
- 4 hollow inserts for M5/M6 screws
- Standard length: 6000 mm

PR 32



Weight	0.87 kg/m	Moment of inertia I _x	3.29 cm ⁴
Part no. 6 m	201072 6000	Moment of inertia I _y	2.69 cm ⁴
		Moment of resistance W _x	2.27 cm ³
		Moment of resistance W _y	1.57 cm ³

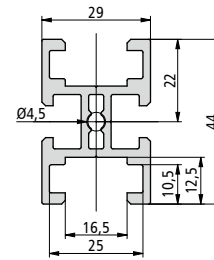


- Aluminium, naturally anodised
- 1 T-slot insert for slot nuts,
1 slot insert 16 mm for multi-skin sheets
- 1 hollow insert for M5/M6 screws
- Standard length: 6000 mm

PR 44



Weight	1.10 kg/m	Moment of inertia I _x	6.18 cm ⁴
Part no. 6 m	201098 6000	Moment of inertia I _y	4.28 cm ⁴
		Moment of resistance W _x	3.86 cm ³
		Moment of resistance W _y	2.59 cm ³

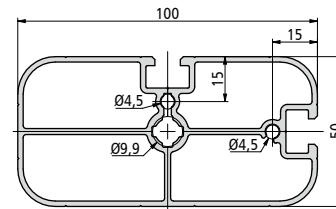


- Aluminium, naturally anodised
- 2 T-slot inserts for slot nuts,
2 slot inserts 16 mm for multi-skin sheets
- 1 hollow insert for M5/M6 screws
- Standard length: 6000 mm

PS 100-50



Weight	2.40 kg/m	Moment of inertia I _x	24.11 cm ⁴
Part no. 6 m	200030 6000	Moment of inertia I _y	81.88 cm ⁴
		Moment of resistance W _x	9.43 cm ³
		Moment of resistance W _y	15.81 cm ³

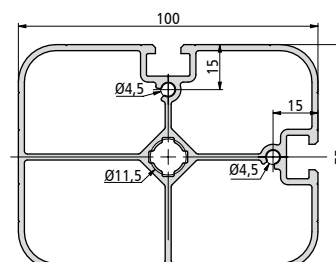


- Aluminium, naturally anodised
- 2 T-slot inserts for slot nuts
- 3 hollow inserts for M5/6/10 screws
- Standard length: 6000 mm

PS 100-75



Weight	3.00 kg/m	Moment of inertia I _x	68.53 cm ⁴
Part no. 6 m	200031 6000	Moment of inertia I _y	112.7 cm ⁴
		Moment of resistance W _x	17.77 cm ³
		Moment of resistance W _y	21.83 cm ³



- Aluminium, naturally anodised
- 2 T-slot inserts for slot nuts
- 3 hollow inserts for M5/6/10 screws
- Standard length: 6000 mm



PS 50

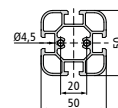


M10 machine feet-mounting plate for PS 50

Part no.: 209001 0181

4 units

Weight	1.73 kg/m	Moment of inertia I _x	15.39 cm ⁴
Part no. 6 m	200017 6000	Moment of inertia I _y	15.90 cm ⁴
		Moment of resistance W _x	6.16 cm ³
		Moment of resistance W _y	6.36 cm ³



- Aluminium, naturally anodised
- 4 T-slot inserts for slot nuts
- 2 hollow inserts for M5/M6 screws
- Standard length: 6000 mm

PS 75

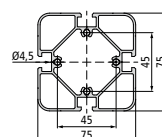


M10 machine feet-mounting plate for PS 75

Part no.: 209001 0254

4 units

Weight	2.65 kg/m	Moment of inertia I _x	59.15 cm ⁴
Part no. 6 m	200023 6000	Moment of inertia I _y	59.15 cm ⁴
		Moment of resistance W _x	15.77 cm ³
		Moment of resistance W _y	15.77 cm ³



- Aluminium, naturally anodised
- 4 T-slot inserts for slot nuts
- 4 hollow inserts for M5/M6 screws
- Standard length: 6000 mm

Profile cover for PS 75

RAL 7012 / Basalt grey

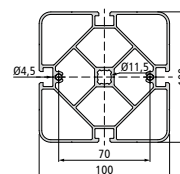
Part no.: 209001 0100

10 units

PS 100



Weight	4.34 kg/m	Moment of inertia I _x	159.37 cm ⁴
Part no. 6 m	200018 6000	Moment of inertia I _y	165.52 cm ⁴
		Moment of resistance W _x	31.87 cm ³
		Moment of resistance W _y	33.12 cm ³

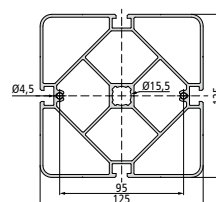


- Aluminium, naturally anodised
- 4 T-slot inserts for slot nuts
- 3 hollow inserts for M5/6/12 screws
- Standard length: 6000 mm

PS 125



Weight	5.98 kg/m	Moment of inertia I _x	351.29 cm ⁴
Part no. 6 m	200024 6000	Moment of inertia I _y	361.87 cm ⁴
		Moment of resistance W _x	56.21 cm ³
		Moment of resistance W _y	57.92 cm ³

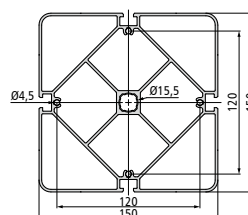


- Aluminium, naturally anodised
- 4 T-slot inserts for slot nuts
- 3 hollow inserts for M5/6/16 screws
- Standard length: 6000 mm

PS 150



Weight	7.59 kg/m	Moment of inertia I _x	644.85 cm ⁴
Part no. 6 m	200037 6000	Moment of inertia I _y	644.85 cm ⁴
		Moment of resistance W _x	85.98 cm ³
		Moment of resistance W _y	85.98 cm ³

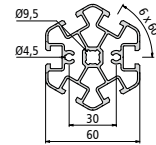


- Aluminium, naturally anodised
- 4 T-slot inserts for slot nuts
- 5 hollow inserts for M5/6/16 screws
- Standard length: 6000 mm

PS 60-6



Weight	2.13 kg/m	Moment of inertia I _x	21.86 cm ⁴
Part no. 6 m	200039 6000	Moment of inertia I _y	22.57 cm ⁴
		Moment of resistance W _x	6.49 cm ³
		Moment of resistance W _y	7.52 cm ³

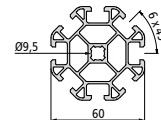


- Aluminium, naturally anodised
- 6 T-slot inserts for slot nuts
- 3 hollow inserts for M5/6/10 screws
- Standard length: 6000 mm

PS 60-8



Weight	2.18 kg/m	Moment of inertia I _x	22.68 cm ⁴
Part no. 6 m	200041 6000	Moment of inertia I _y	22.68 cm ⁴
		Moment of resistance W _x	7.56 cm ³
		Moment of resistance W _y	7.56 cm ³

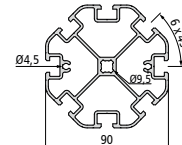


- Aluminium, naturally anodised
- 8 T-slot inserts for slot nuts
- 1 hollow insert for M10 screws
- Standard length: 6000 mm

PS 90-8



Weight	3.73 kg/m	Moment of inertia I _x	91.54 cm ⁴
Part no. 6 m	200035 6000	Moment of inertia I _y	96.15 cm ⁴
		Moment of resistance W _x	20.34 cm ³
		Moment of resistance W _y	21.36 cm ³

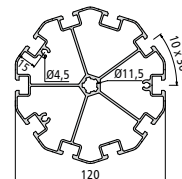


- Aluminium, naturally anodised
- 8 T-slot inserts for slot nuts
- 3 hollow inserts for M5/6/10 screws
- Standard length: 6000 mm

PS 120-10



Weight	4.77 kg/m	Moment of inertia I _x	211.55 cm ⁴
Part no. 6 m	200036 6000	Moment of inertia I _y	220.44 cm ⁴
		Moment of resistance W _x	35.26 cm ³
		Moment of resistance W _y	35.21 cm ³

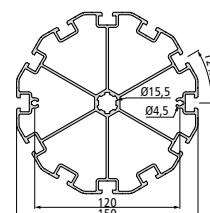


- Aluminium, naturally anodised
- 10 T-slot inserts for slot nuts
- 4 hollow inserts for M5/6/12 screws
- Standard length: 6000 mm

PS 150-12



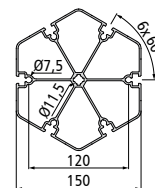
Weight	6.67 kg/m	Moment of inertia I _x	476.47 cm ⁴
Part no. 6 m	200038 6000	Moment of inertia I _y	458.07 cm ⁴
		Moment of resistance W _x	63.53 cm ³
		Moment of resistance W _y	61.08 cm ³



- Aluminium, naturally anodised
- 12 T-slot inserts for slot nuts
- 3 hollow inserts for M5/6/16 screws
- Standard length: 6000 mm



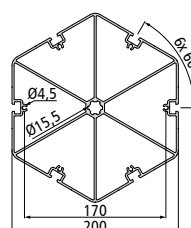
PS 150-6



Weight	6.59 kg/m	Moment of inertia I _x	432.37 cm ⁴
Part no. 6 m	200025 6000	Moment of inertia I _y	432.27 cm ⁴
		Moment of resistance W _x	56.75 cm ³
		Moment of resistance W _y	64.32 cm ³

- Aluminium, naturally anodised
- 6 T-slot inserts for slot nuts
- 7 hollow inserts for M8/12 screws
- Standard length: 6000 mm

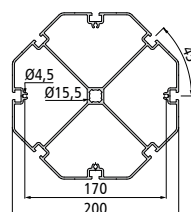
PS 200-6



Weight	10.6 kg/m	Moment of inertia I _x	1458.68 cm ⁴
Part no. 6 m	200026 6000	Moment of inertia I _y	1458.68 cm ⁴
		Moment of resistance W _x	128.52 cm ³
		Moment of resistance W _y	145.87 cm ³

- Aluminium, naturally anodised
- 6 T-slot inserts for slot nuts
- 7 hollow inserts for M5/6/16 screws
- Standard length: 6000 mm

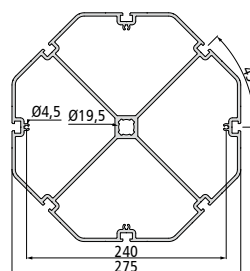
PS 200-8



Weight	8.59 kg/m	Moment of inertia I _x	1188 cm ⁴
Part no. 6 m	200027 6000	Moment of inertia I _y	1188 cm ⁴
		Moment of resistance W _x	118.8 cm ³
		Moment of resistance W _y	118.8 cm ³

- Aluminium, naturally anodised
- 8 T-slot inserts for slot nuts
- 5 hollow inserts for M5/6/16 screws
- Standard length: 6000 mm

PS 275-8

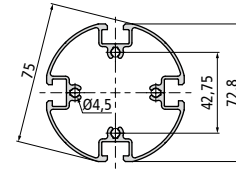


Weight	17.65 kg/m	Moment of inertia I _x	4610.96 cm ⁴
Part no. 6 m	200028 6000	Moment of inertia I _y	4610.96 cm ⁴
		Moment of resistance W _x	335.34 cm ³
		Moment of resistance W _y	335.34 cm ³

- Aluminium, naturally anodised
- 8 T-slot inserts for slot nuts
- 5 hollow inserts for M5/6/20 screws
- Standard length: 6000 mm

This Profile is a special part and not available from stock. It can be ordered only in large quantities.

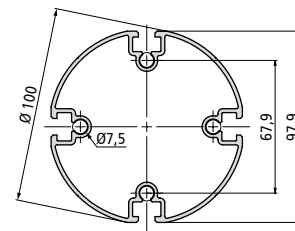
PH 75-4



Weight	1.77 kg/m	Moment of inertia I _x	33.54 cm ⁴
Part no. 6 m	201102 6000	Moment of inertia I _y	33.54 cm ⁴
		Moment of resistance W _x	9.21 cm ³
		Moment of resistance W _y	9.21 cm ³

- Aluminium, naturally anodised
- 4 T-slot inserts for slot nuts
- 4 hollow inserts for M5/M6 screws
- Standard length: 6000 mm

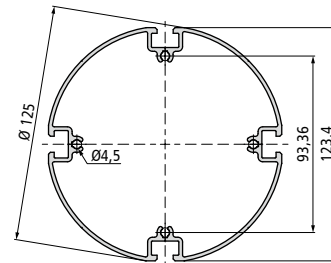
PH 100-4



Weight	2.62 kg/m	Moment of inertia I _x	96.67 cm ⁴
Part no. 6 m	201105 6000	Moment of inertia I _y	96.67 cm ⁴
		Moment of resistance W _x	19.73 cm ³
		Moment of resistance W _y	19.73 cm ³

- Aluminium, naturally anodised
- 4 T-slot inserts for slot nuts
- 4 hollow inserts for M8 screws
- Standard lengths: 6000 mm

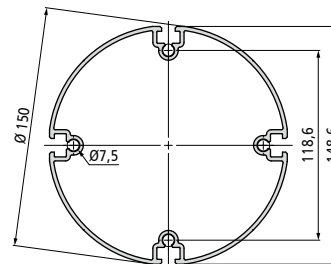
PH 125-4



Weight	2.97 kg/m	Moment of inertia I _x	186.84 cm ⁴
Part no. 6 m	201088 6000	Moment of inertia I _y	186.84 cm ⁴
		Moment of resistance W _x	30.28 cm ³
		Moment of resistance W _y	30.28 cm ³

- Aluminium, naturally anodised
- 4 T-slot inserts for slot nuts
- 4 hollow inserts for M5/M6 screws
- Standard lengths: 6000 mm and 6500 mm

PH 150-4

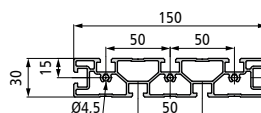


Weight	4.25 kg/m	Moment of inertia I _x	390.23 cm ⁴
Part no. 7.4 m	201107 7400	Moment of inertia I _y	390.23 cm ⁴
		Moment of resistance W _x	52.52 cm ³
		Moment of resistance W _y	52.52 cm ³

- Aluminium, naturally anodised
- 4 T-slot inserts for slot nuts
- 4 hollow inserts for M8 screws
- Standard length: 7400 mm



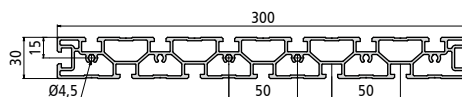
PR 150-50



Weight	3.12 kg/m	Moment of inertia I _x	12.18 cm ⁴
Part no. 6 m	201095 6000	Moment of inertia I _y	251.82 cm ⁴
		Moment of resistance W _x	8.12 cm ³
		Moment of resistance W _y	33.58 cm ³

- Aluminium, naturally anodised
- 7 T-slot inserts for slot nuts
- 3 hollow inserts for M5/M6 screws
- Standard length: 6000 mm

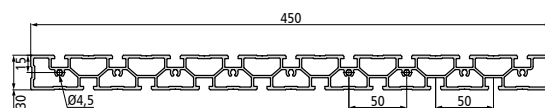
PR 300-50



Weight	6.55 kg/m	Moment of inertia I _x	25.6 cm ⁴
Part no. 6 m	201113 6000	Moment of inertia I _y	1994.76 cm ⁴
		Moment of resistance W _x	17.07 cm ³
		Moment of resistance W _y	132.98 cm ³

- Aluminium, naturally anodised
- 13 T-slot inserts for slot nuts
- 6 hollow inserts for M5/M6 screws
- Standard length: 6000 mm

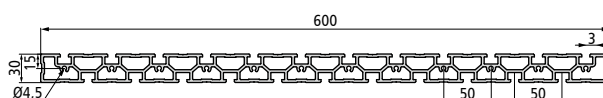
PR 450-50



Weight	10.46 kg/m	Moment of inertia I _x	42.51 cm ⁴
Part no. 6 m	201097 6000	Moment of inertia I _y	6982.28 cm ⁴
		Moment of resistance W _x	28.34 cm ³
		Moment of resistance W _y	310.32 cm ³

- Aluminium, naturally anodised
- 17 T-slot inserts for slot nuts
- 9 hollow inserts for M5/M6 screws
- Standard length: 6000 mm

PR 600-50



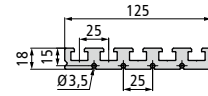
Weight	17.20 kg/m	Moment of inertia I _x	64.12 cm ⁴
Part no. 3 m	201099 3000	Moment of inertia I _y	19268.13 cm ⁴
		Moment of resistance W _x	42.75 cm ³
		Moment of resistance W _y	642.27 cm ³

- Aluminium, naturally anodised
- 23 T-slot inserts for slot nuts
- 12 hollow inserts for M5/M6 screws
- Standard length: 3000 mm

PR 125-25



Weight	4.07 kg/m	Moment of inertia I _x	4.28 cm ⁴
Part no. 6 m	201091 6000	Moment of inertia I _y	198.03 cm ⁴
		Moment of resistance W _x	4.19 cm ³
		Moment of resistance W _y	31.68 cm ³

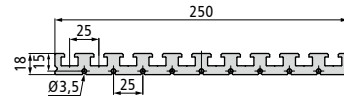


- Aluminium, naturally anodised
- 5 T-slot inserts for slot nuts
- 4 hollow inserts for M5/M6 screws
- Standard length: 6000 mm

PR 250-25



Weight	8.14 kg/m	Moment of inertia I _x	8.55 cm ⁴
Part no. 6 m	201077 6000	Moment of inertia I _y	1573.62 cm ⁴
		Moment of resistance W _x	8.38 cm ³
		Moment of resistance W _y	125.89 cm ³

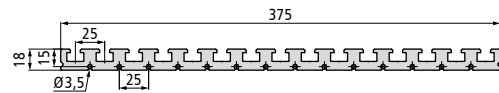


- Aluminium, naturally anodised
- 10 T-slot inserts for slot nuts
- 9 hollow inserts for M4 screws
- Standard length: 6000 mm

PR 375-25

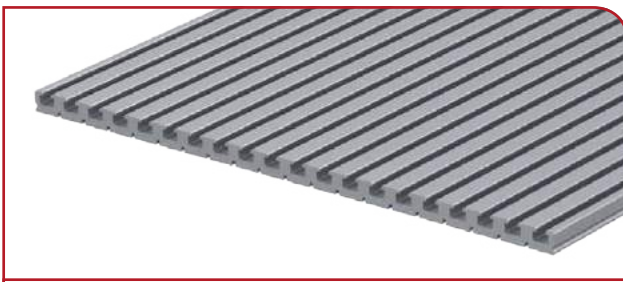


Weight	12.21 kg/m	Moment of inertia I _x	12.81 cm ⁴
Part no. 6 m	201092 6000	Moment of inertia I _y	5304.73 cm ⁴
		Moment of resistance W _x	12.57 cm ³
		Moment of resistance W _y	282.92 cm ³

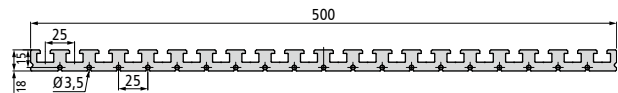


- Aluminium, naturally anodised
- 15 T-slot inserts for slot nuts
- 14 hollow inserts for M5/M6 screws
- Standard length: 6000 mm

PR 500-25



Weight	17.08 kg/m	Moment of inertia I _x	17.08 cm ⁴
Part no. 6 m	201093 6000	Moment of inertia I _y	12569.34 cm ⁴
		Moment of resistance W _x	16.77 cm ³
		Moment of resistance W _y	502.77 cm ³



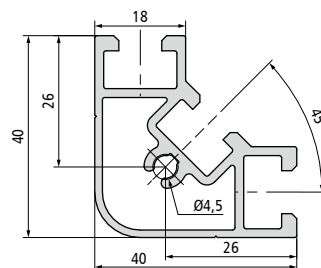
- Aluminium, naturally anodised
- 20 T-slot inserts for slot nuts
- 19 hollow inserts for M4 screws
- Standard length: 6000 mm



PW 40



Weight	0.94 kg/m	Moment of inertia I _x	4.82 cm ⁴
Part no. 6 m	201056 6000	Moment of inertia I _y	4.82 cm ⁴
		Moment of resistance W _x	2.13 cm ³
		Moment of resistance W _y	2.13 cm ³

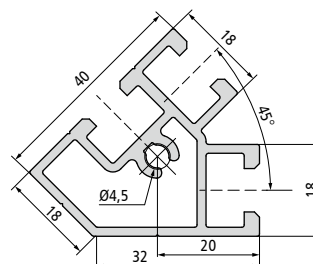


- Aluminium, naturally anodised
- 3 T-slot inserts for slot nuts
- 1 hollow insert for M5/M6 screws
- Standard length: 6000 mm

PW 45



Weight	0.96 kg/m	Moment of inertia I _x	4.65 cm ⁴
Part no. 6 m	201057 6000	Moment of inertia I _y	4.15 cm ⁴
		Moment of resistance W _x	1.84 cm ³
		Moment of resistance W _y	1.71 cm ³

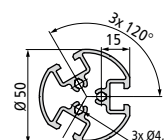


- Aluminium, naturally anodised
- 3 T-slot inserts for slot nuts
- 1 hollow insert for M5/M6 screws
- Standard length: 6000 mm

PH 50-3



Weight	1.38 kg/m	Moment of inertia I _x	9.48 cm ⁴
Part no. 6 m	201090 6000	Moment of inertia I _y	9.48 cm ⁴
		Moment of resistance W _x	3.79 cm ³
		Moment of resistance W _y	3.79 cm ³

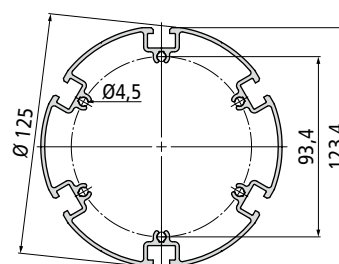


- Aluminium, naturally anodised
- 3 T-slot inserts for slot nuts
- 3 hollow inserts for M5/M6 screws
- Standard length: 6000 mm

PH 125-6



Weight	3.43 kg/m	Moment of inertia I _x	208.06 cm ⁴
Part no. 6 m	201088 6060	Moment of inertia I _y	208.06 cm ⁴
		Moment of resistance W _x	33.29 cm ³
		Moment of resistance W _y	33.29 cm ³



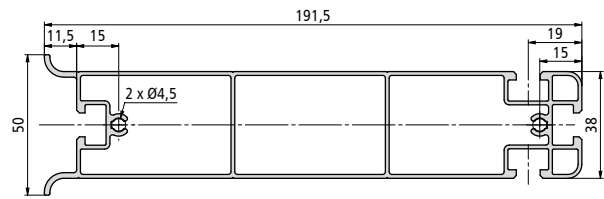
- Aluminium, naturally anodised
- 6 T-slot inserts for slot nuts
- 6 hollow inserts for M5/M6 screws
- Standard length: 6000 mm



PV 190 for leaflet dispensers

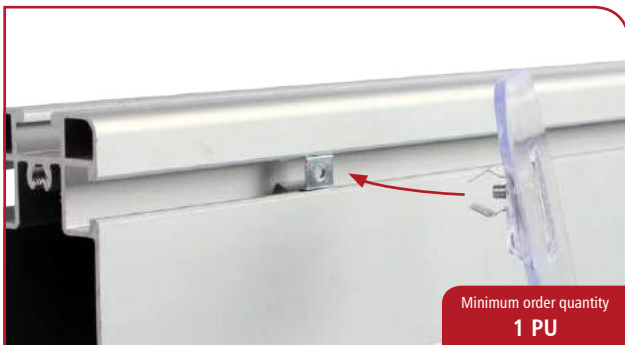


Weight	2.59 kg/m	Moment of inertia Ix	21.92 cm ⁴
Part no. 6 m	201079 6000	Moment of inertia Iy	398.63 cm ⁴
		Moment of resistance Wx	8.77 cm ³
		Moment of resistance Wy	39.45 cm ³



- Aluminium, naturally anodised
- 4 T-slot inserts for slot nuts
- 2 hollow inserts for M5/M6 screws
- Standard length: 6000 mm

T-SLOT RETAINING CLIP

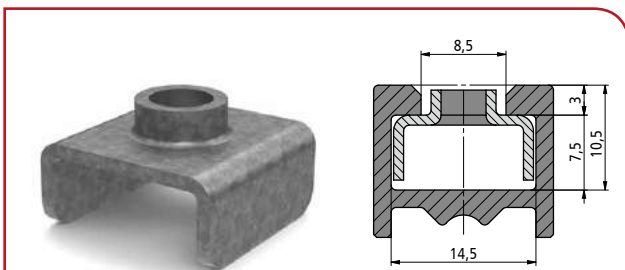


Packaging unit [PU]	Part number / PU
100 units	443118

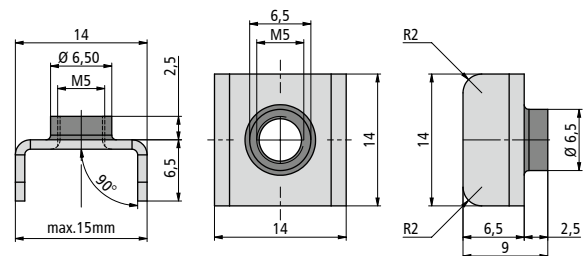


- Galvanised T-slot retaining clip made of spring steel with washer and M4x8 screw
- For click fixing e.g. of leaflet dispensers to PV 190 profile
- Simple release by tilting the T-slot retaining clip at an angle

T-SLOT FASTENER



Packaging unit [PU]	Part number/unit
100 units	209001 0257

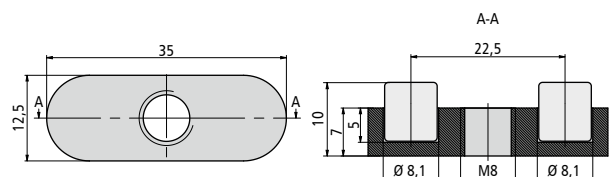


- T-slot fastener with M5 threaded nozzle
- Steel plate 1mm, galvanised
- For fixing suspensions and panels
- Can be slid into T-slot

T-SLOT NUT MAGNET



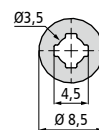
Packaging unit [PU]	Part number/unit
1 units	632501 1000



- T-slot nut made of POM with 2 magnets
- Thread for M8 grub screw with 8 mm length
- For attaching magnetic material
- Enables quick and powerful positioning



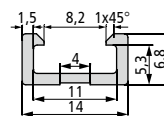
SLIDE-IN PROFILE PE 8, can be slid into standard T-slot



Weight	0.12 kg/m	Moment of inertia Ix	0.024 cm ⁴
Part no. 6 m	201075 6000	Moment of inertia Iy	0.024 cm ⁴
		Moment of resistance Wx	0.056 cm ³
		Moment of resistance Wy	0.056 cm ³

- Aluminium, naturally anodised
- 1 hollow insert for screws
- Profile fits in standard T-slot
- Standard length: 6000 mm

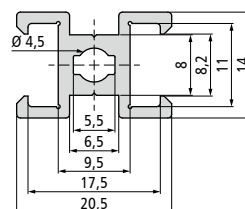
SLIDE-IN PROFILE PE 14, can be slid into standard T-slot



Weight	0.11 kg/m	Moment of inertia Ix	0.018 cm ⁴
Part no. 6 m	201062 6000	Moment of inertia Iy	0.1 cm ⁴
		Moment of resistance Wx	0.042 cm ³
		Moment of resistance Wy	0.143 cm ³

- Aluminium, naturally anodised
- 1 T-slot insert for LED strip
- Profile fits in standard T-slot
- Standard length: 6000 mm

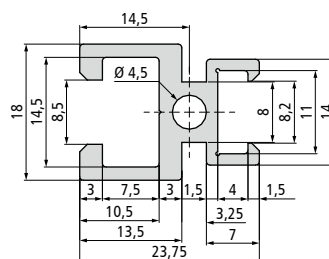
SLIDE-IN PROFILE PE 14-2, can be slid into standard T-slot



Weight	0.3 kg/m	Moment of inertia Ix	0.24 cm ⁴
Part no. 6 m	201073 6000	Moment of inertia Iy	0.33 cm ⁴
		Moment of resistance Wx	0.34 cm ³
		Moment of resistance Wy	0.32 cm ³

- Aluminium, naturally anodised
- 2 T-slot inserts for T-slot or LED strip
- 1 hollow insert for M5/M6 screws
- Standard length: 6000 mm

SLIDE-IN PROFILE PE 14-PV 20, can be slid into standard T-slot



Weight	0.43 kg/m	Moment of inertia Ix	0.56 cm ⁴
Part no. 6 m	201074 6000	Moment of inertia Iy	0.64 cm ⁴
		Moment of resistance Wx	0.62 cm ³
		Moment of resistance Wy	0.51 cm ³

- Aluminium, naturally anodised
- 1 standard T-slot, 1 T-slot for LED strip
- 1 hollow insert for M5 screws
- Standard length: 6000 mm

T-SLOT COVER PT 1 and PT 2



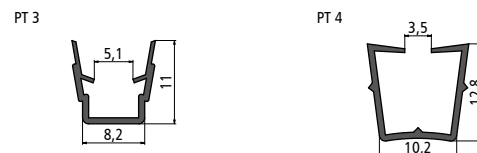
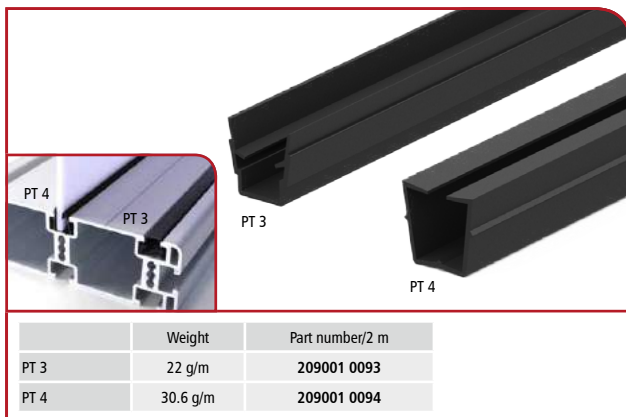
- Transparent cover for LED strips
- Ribbed plastic surface for optimal light scatter
- PT 1 for PE 14 and PT 2 for standard T-slot
- Length: max. 5000 mm

T-SLOT COVER PG 1 and PG 2



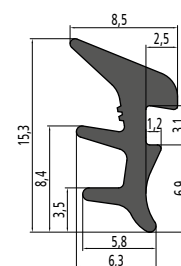
- Grey rubberised T-slot cover
- Smooth surface, high quality optics
- Size for standard T-slot
- Length: sold by the meter

EDGING PROFILE PT 3 and PT 4



- Black edging and cover profile
- Suitable for standard T-slot
- For 3 to 6 mm washers
- Length: max. 2000 mm
- Black edging profile
- Suitable for standard T-slot
- For 1 to 3 mm washers
- Length: max. 2000 mm

EDGING PROFILE, 1-fold



- Black edging band
- For fixing 2 to 4 mm washers
- For all T-slot inserts
- Flexible and UV stable



CLAMPING CONNECTOR angled and straight



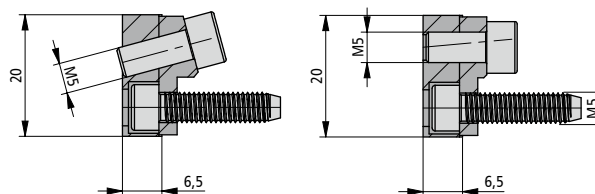
Fig. shows clamping connector angular

Clamping connector, angled

1x T-slot nut, 1x mounting link 15°,
2x M5 screws
Part no./PU: 209001 0029

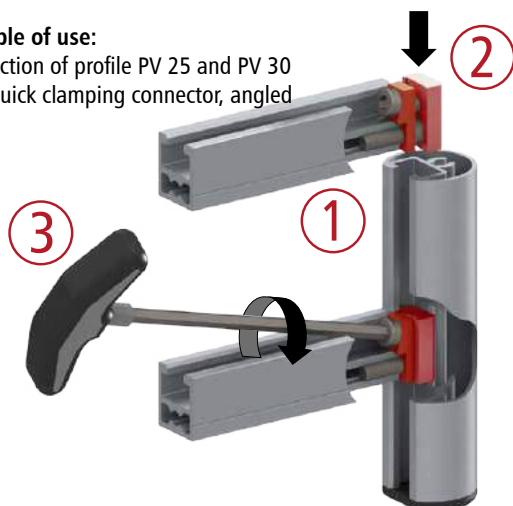
Clamping connector, straight

1x T-slot nut, 1x mounting lug straight,
2x M5 screws
Part no./PU: 209001 0019



Example of use:

Connection of profile PV 25 and PV 30
with quick clamping connector, angled



Features

- Quick and easy clamping connection of aluminium T-slot profiles
- Special T-slot nut with mounting link straight, or 15° straight for simple mounting
- Good accessibility to the fixing screw
- Non-positive, positive-locking and twist-proof mounting

Description:

- 1) Screw clamping connector to hollow insert.
- 2) Insert slide nut into T-slot
- 3) Tighten with Allen key.

CLAMPING CONNECTOR , angled, with spring-loaded ball

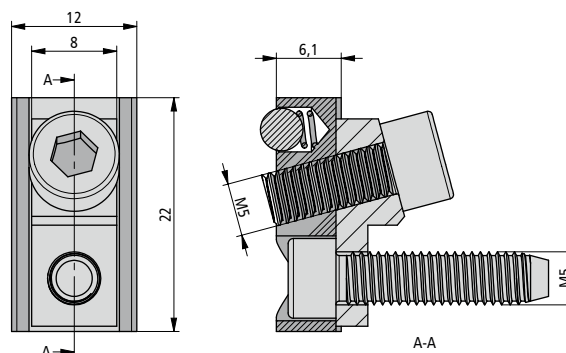


consisting of

1x T-slot nut with pressure ball,
1x mounting link 15°,
2x M5 screws

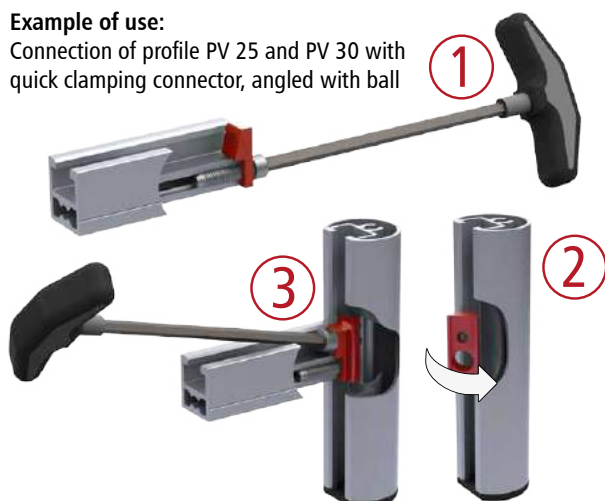
Part no. | PU 10

209001 0040



Example of use:

Connection of profile PV 25 and PV 30 with
quick clamping connector, angled with ball



Features

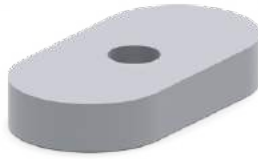
- Quick and easy clamping connection of aluminium T-slot profiles
- Special T-slot nut with pressure ball and mounting link 15°
- Ideal for subsequent mounting between two aluminium T-slot profiles
- Good accessibility to the fixing screw, non-positive, positive-locking and twist-proof mounting

Description:

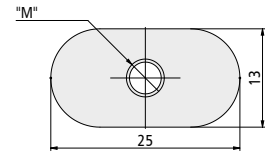
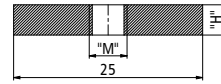
- 1) Screw clamping connector to hollow insert.
- 2) Laterally engage sliding nut in T-slot.
- 3) Place clamping connector together with sliding nut and tighten with allen key.



T-SLOT NUT 1

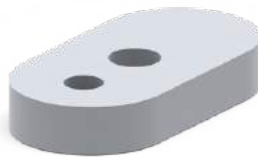


Thread	Height [mm]	Packaging unit [PU]	Part number/PU
M4	3	20	209001 0030
M5	4	20	209001 0021
M6	5	20	209001 0032
M8	6	20	209001 0034

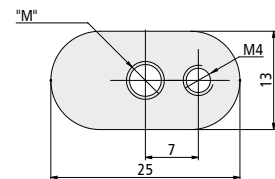
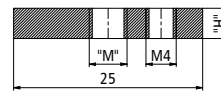


- T-slot nut for aluminium T-slot
- Clamp and expander fixing
- Material galvanised steel
- Thread M4, M5, M6 and M8

T-SLOT NUT 2

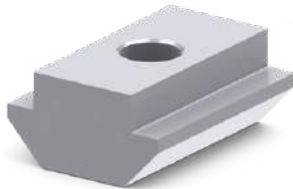


Thread	Height [mm]	Packaging unit [PU]	Part number/PU
M4	3	20	209001 0017
M5	4	20	209001 0022
M6	5	20	209001 0031
M8	6	20	209001 0033

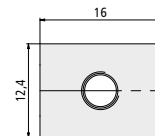
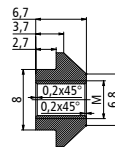


- T-slot nut for aluminium T-slot
- Clamp and expander fixing
- Material galvanised steel
- Thread M4, M5, M6, M8 and fixing M4 (incl. grub screw)

T-SLOT NUT 4

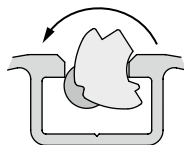


Thread	Packaging unit [PU]	Part number/PU
M5	20	209001 0055
M6	20	209001 0056
M8	20	209001 0057
M6 (stainless)	20	209001 0058



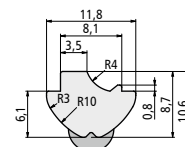
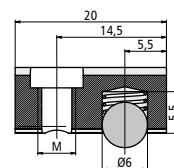
- T-slot nut for aluminium T-slot
- Clamp and expander fixing
- Thread M5, M6 and M8 (galvanised steel)
- Thread M6 stainless

T-SLOT NUT 6



Minimum order quantity
1 PU

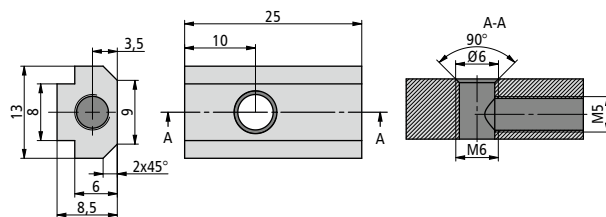
Thread	Packaging unit [PU]	Part number/unit
M6	100 units	209001 0015
M8	100 units	209001 0018



- T-slot nut with pressure ball for aluminium T-slot
- Slot nut can be retroactively tilted
- Material galvanised steel
- Thread M6 or M8



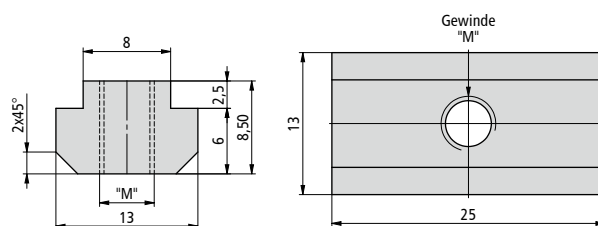
T-SLOT NUT 7



- T-slot nut galvanised steel
- Thread M6 and M5 at the front
- For angle fixing in the T-slot
- Can be slid into T-slot

Thread	Packaging unit [PU]	Part number/unit
M6	100 units	209001 0268

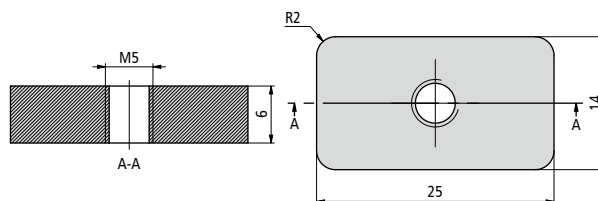
T-SLOT NUT 8



- T-slot nut long galvanised steel
- Thread M4, M5, M6
- For clamp and expander fixing
- Can be slid into T-slot

Thread	Packaging unit [PU]	Part number/PU
M4	20 units	209001 0023
M5		209001 0024
M6		209001 0025

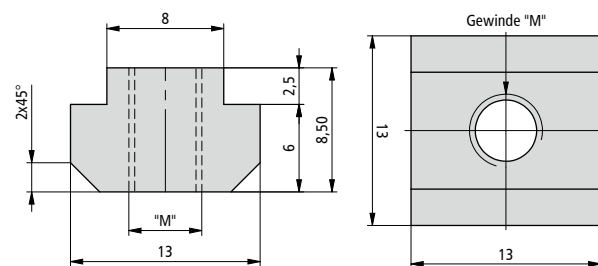
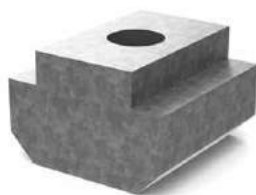
T-SLOT NUT 9



- T-slot nut galvanised steel
- Rectangular shape with M5 thread
- For clamp and expander fixing
- Can be slid into T-slot

Thread	Packaging unit [PU]	Part number/PU
M5	10 units	209001 0287

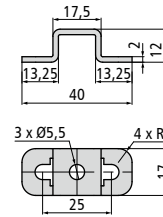
T-SLOT NUT 10



- T-slot nut short galvanised steel
- Thread M4, M5, M6
- For clamp and expander fixing
- Can be slid into T-slot

Thread	Packaging unit [PU]	Part number/PU
M4	20 units	209001 0026
M5		209001 0027
M6		209001 0028

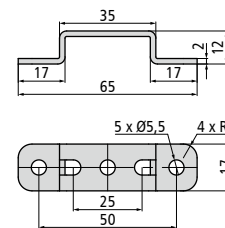
SHEET METAL ANGLE LW 25



- Steel 2 mm galvanised and powder-coated RAL 9006
- Suitable for M5 screw mounting in 25 mm raster
- Low installation height of 12 mm
- For profile and wall mounting

Dimensions LxWxH [mm]	Packaging unit [PU]	Part number/PU
40 x 17 x 12	10 units	442015

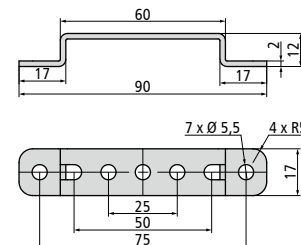
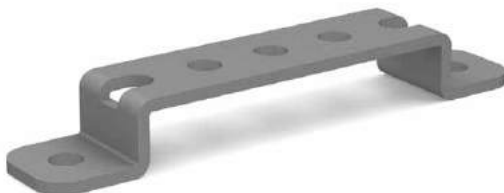
SHEET METAL ANGLE LW 50



- Steel 2 mm galvanised and powder-coated RAL 9006
- Suitable for M5 screw mounting in 25 mm raster
- Low installation height of 12 mm
- For profile and wall mounting

Dimensions LxWxH [mm]	Packaging unit [PU]	Part number/PU
65 x 17 x 12	10 units	442016

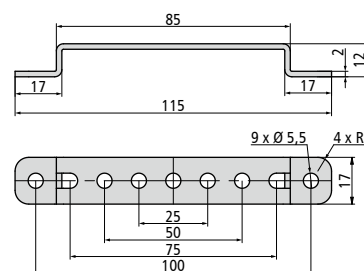
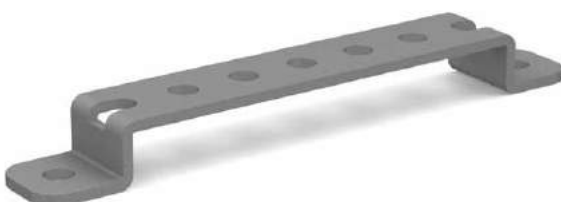
SHEET METAL ANGLE LW 75



- Steel 2 mm galvanised and powder-coated RAL 9006
- Suitable for M5 screw mounting in 25 mm raster
- Low installation height of 12 mm
- For profile and wall mounting

Dimensions LxWxH [mm]	Packaging unit [PU]	Part number/PU
90 x 17 x 12	10 units	442017

SHEET METAL ANGLE LW 100

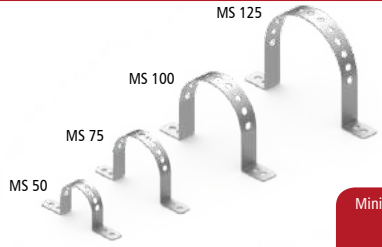


- Steel 2 mm galvanised and powder-coated RAL 9006
- Suitable for M5 screw mounting in 25 mm raster
- Low installation height of 12 mm
- For profile and wall mounting

Dimensions LxWxH [mm]	Packaging unit [PU]	Part number/PU
115 x 17 x 12	10 units	442018



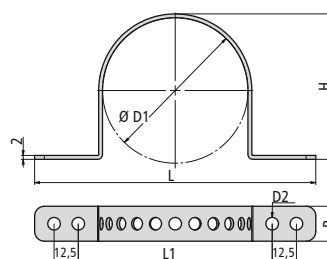
MOUNTING CLAMP MS



MS 125
MS 100
MS 75
MS 50

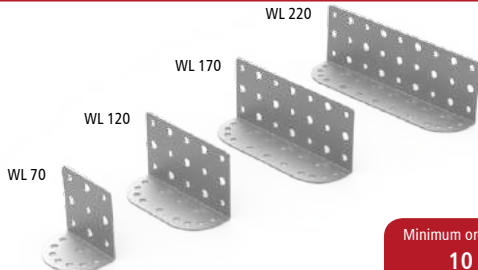
Minimum order quantity
10 PU

PU 2 units	L x W x H [mm]	L1 [mm]	D1 [mm]	D2 [mm]	Part no./PU
MS 50	120 x 18 x 50	75	50	6.5	442010
MS 75	145 x 18 x 75	100	75	6.5	442011
MS 100	175 x 25 x 100	125	100	8.5	442012
MS 125	200 x 25 x 125	150	125	8.5	442013



- Punched bending plate 2 mm
- 4 different versions
- powder-coated white aluminium
- Fixing holes Ø6.5 and Ø8.5 mm

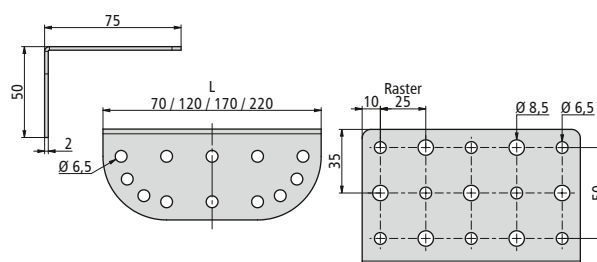
ADJUSTMENT ANGLE WL



WL 220
WL 170
WL 120
WL 70

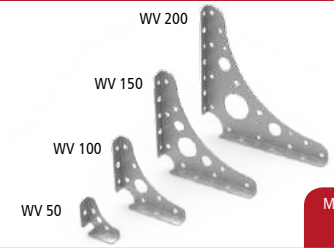
Minimum order quantity
10 PU

	WL 70	WL 120	WL 170	WL 220
Packaging unit [PU]	2	2	2	2
Part number/PU	209001 0187	209001 0188	209001 0189	209001 0190



- Punched bending plate 2 mm
- 4 different versions
- powder-coated white aluminium
- Fixing holes Ø6.5 and Ø8.5 mm

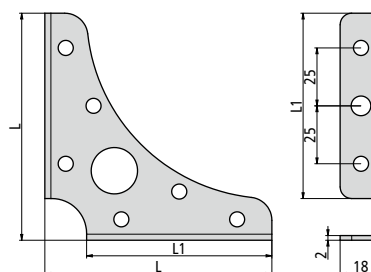
CONNECTING ANGLE WV



WV 200
WV 150
WV 100
WV 50

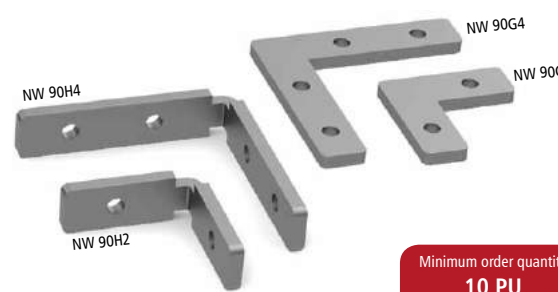
Minimum order quantity
10 PU

PU 2 units	L [mm]	L1 [mm]	Part no./PU
WV 50	48	40	209001 0168
WV 100	98	80	209001 0170
WV 150	148	130	209001 0169
WV 200	198	170	209001 0171



- Punched bending plate 2 mm
- 4 different versions
- powder-coated white aluminium
- Fixing holes Ø6.5 and Ø8.5 mm

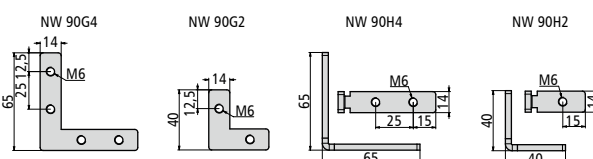
GROOVE ANGLE NW



NW 90H4
NW 90H2
NW 90G4
NW 90G2

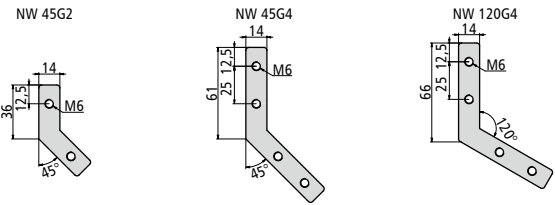
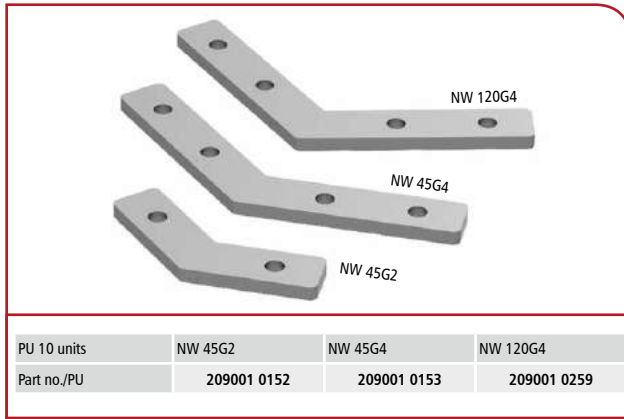
Minimum order quantity
10 PU

PU 10 units	NW 90H2	NW 90H4	NW 90G2	NW 90G4
Part no./PU	209001 0154	209001 0155	209001 0150	209001 0151



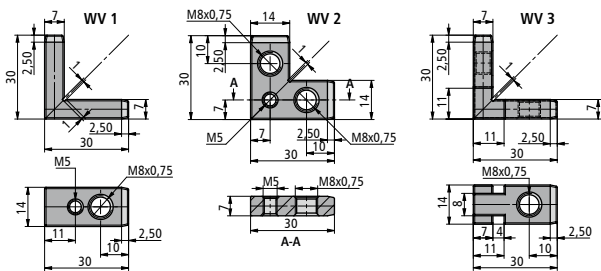
- Groove angle for connecting aluminium T-slot profiles
- 4 different versions in two lengths each
- Flat and upright design material: Steel, 4 mm
- For 45°, 90° and 120° connections incl. M6 grub screw

GROOVE ANGLE NW



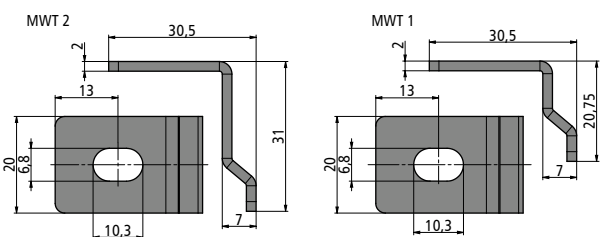
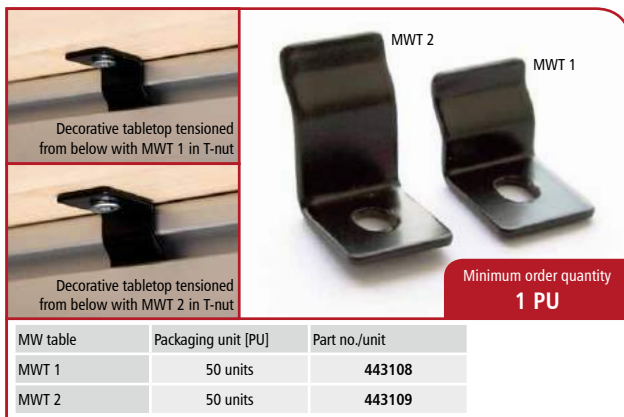
- Groove angle for connecting aluminium T-slot profiles
- 4 different versions in two lengths each
- Flat and upright design material: Steel, 4 mm
- For 45°, 90° and 120° connections incl. M6 grub screw

ANGLE CONNECTOR WV 1, WV 2 and WV 3



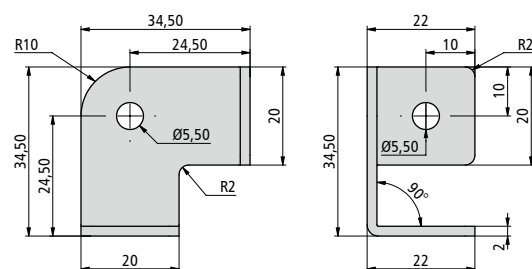
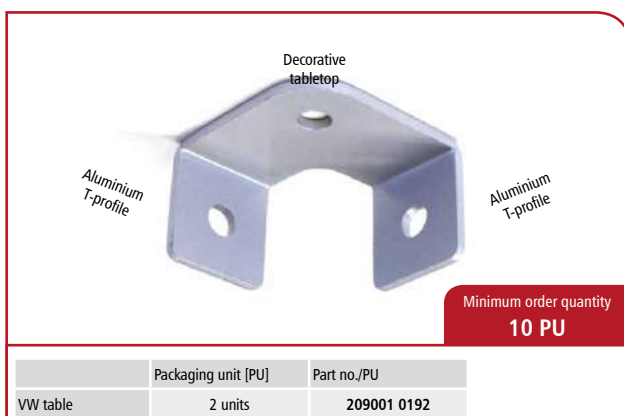
- Material: Die cast aluminium, 7 mm
- WV 1: 2 x thread M8 x 0.75 and 2 x M5
- WV 2: 2 x thread M8 x 0.75 and 1 x M5
- WV 3: 2 x thread M8 x 0.75

MOUNTING ANGLE TABLE



- Easy mounting of decorative plates and clamping profiles
- 2 mm steel sheet, powder-coated black
- MWT 1 for PR 30
- MWT 2 for PV 51, PV 53, PV 54, PV 56

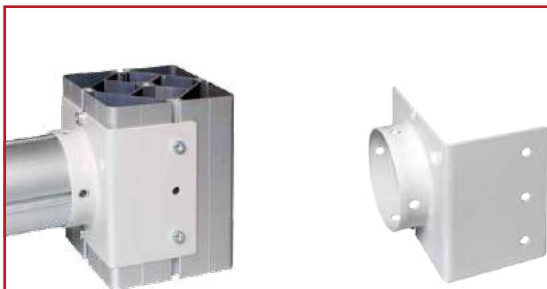
CONNECTION ANGLE TABLE



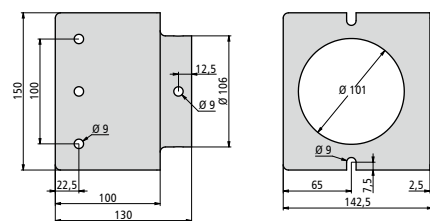
- Suitable for fixing with three points across corner
- 2 mm steel sheet, powder-coated RAL 9006
- Fixing holes Ø5.5
- Angle 3 x 90°



MONTAGE CLAMP PH 100/PS 150



Mounting clip	Part no./unit
PH 100/PS 150	443125 0001

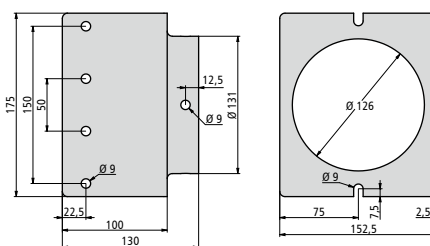


- Connects stand profile PS 150 to hollow profile PH 100
- Deep-drawn solid 2.5 mm steel sheet, powder-coated
- Fixed screw connections M8 screws and T-slot nuts
- Free positioning of profiles without additional holes

MOUNTING CLAMP PH 125/PS 150



Mounting clip	Part no./unit
PH 125/PS 150	443125 0002

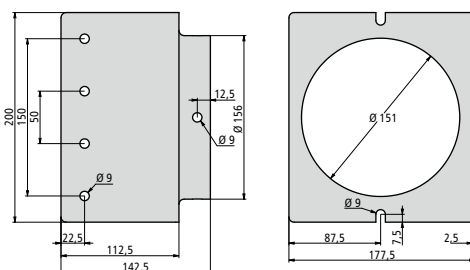


- Connects stand profile PS 150 to hollow profile PH 125
- Deep-drawn solid 2.5 mm steel sheet, powder-coated
- Fixed screw connections M8 screws and T-slot nuts
- Free positioning of profiles without additional holes

MOUNTING CLAMP PH 150/PS 175



Mounting clip	Part no./unit
PH 150/PS 175	443125 0003

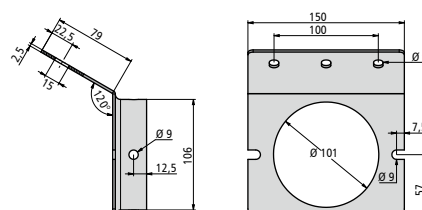


- Connects stand profile PS 175 to hollow profile PH 150
- Deep-drawn solid 2.5 mm steel sheet, powder-coated
- Fixed screw connections M8 screws and T-slot nuts
- Free positioning of profiles without additional holes

MOUNTING CLAMP PH 100/PS 200-6

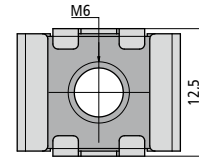
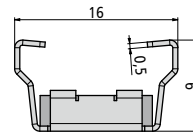


Mounting clip	Part number
PH 100/PS 200-6	443125 0004



- Connects stand profile PS 200-6 to hollow profile PH 100
- Deep-drawn solid 2.5 mm steel sheet, powder-coated
- Fixed screw connections M8 screws and T-slot nuts
- Free positioning of profiles without additional holes

CEILING CLAW for SUSPENDED CEILING / RASTER CEILING T14

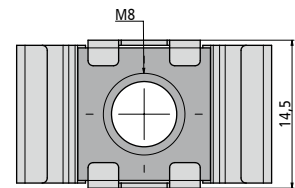
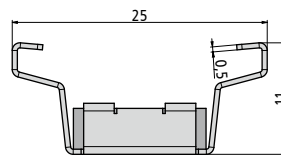


Minimum order quantity
1 PU

	Packaging unit [PU]	Part number/unit
Ceiling claw T14	100 units	892345 0476

- Dimensions: W 16 x D 12.5 x H 9 mm
- Spring steel sheet and steel galvanised
- Retrospective positioning possible
- Free and secure mounting by self-clamping for T14 ceiling systems

CEILING CLAW for SUSPENDED CEILING / RASTER CEILING T24

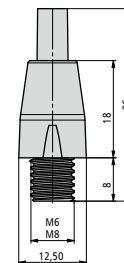
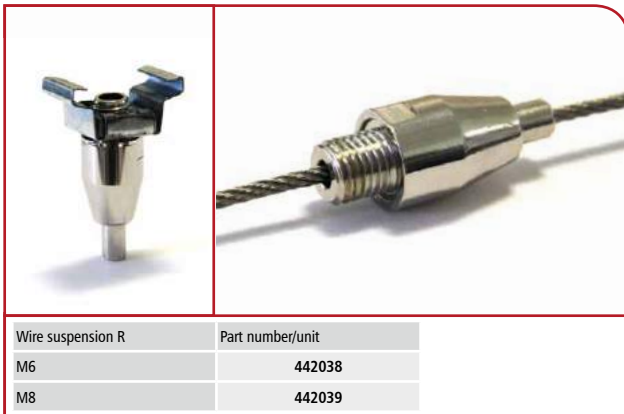


Minimum order quantity
1 PU

	Packaging unit [PU]	Part number/unit
Ceiling claw T24	100 units	892346 0477

- Dimensions: W 25 x D 14.5 x H 11 mm
- Spring steel sheet and steel galvanised
- Retrospective positioning possible
- Free and secure mounting by self-clamping for T24 ceiling systems

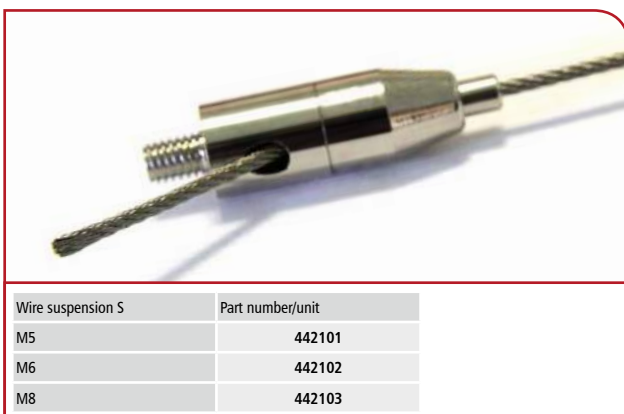
Adjustable WIRE SUSPENSION, rear exit



Wire suspension R	Part number/unit
M6	442038
M8	442039

- 3-ball tensile spring clamping, manually adjustable height
- Rear exit for hidden wire guide
- Wire suspension for 2 mm wire
- Tested tensile load 12 kg with 2 mm stainless steel wire, fastening screw thread M6, material: chromed steel

Adjustable WIRE SUSPENSION, lateral exit

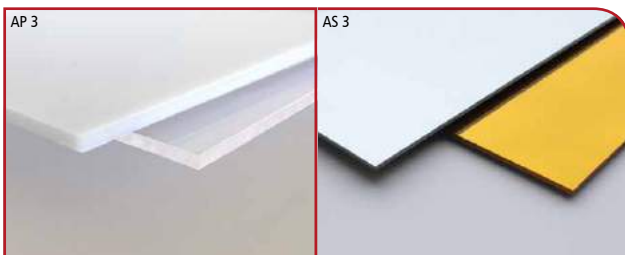


Wire suspension S	Part number/unit
M5	442101
M6	442102
M8	442103

- 3-ball tensile spring clamping, manually adjustable height
- Lateral exit for simple height adjustment
- Wire suspension for 2 mm wire
- Tested tensile load 12 kg with 2 mm stainless steel wire, fastening screw thread M5, M6, M8, material: chromed steel



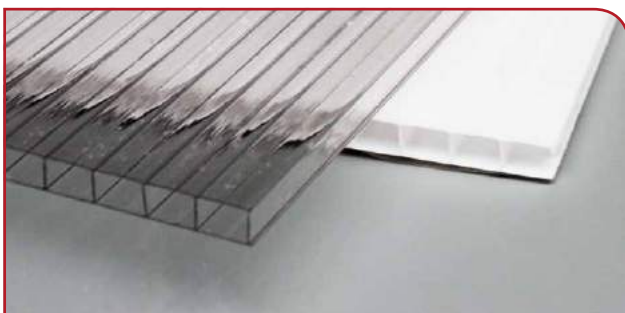
ACRYLIC SHEET GLASS and ACRYLIC SHEETS



	Dimensions [mm]	Part number
AP 3, white	2440 x 1220 x 3	209001 0206
AP 3, transparent		209001 0207
AS 3, gold		209001 0208
AS 3, silver		209001 0209

- Acrylic sheet glass and acrylic sheets 3 mm with protective foil
- Colours: white, transparent, gold and silver
- Dimensions L 2440 x W 1220 mm
- Weight: approx. 3.6 kg/m², approx. 10.72 kg/sheet

MULTI-SKIN SHEETS SP 8



	Dimensions [mm]	Part number
SP 8, white	6000 x 2100 x 8	209001 0204
SP 8, transparent		209001 0205

- Multi-skin sheets 8 mm made of polycarbonate, with protective foil on both sides
- Colour: transparent and white
- Dimensions L 6000 x W 2100 mm
- Weight: approx. 1.2 kg/m²

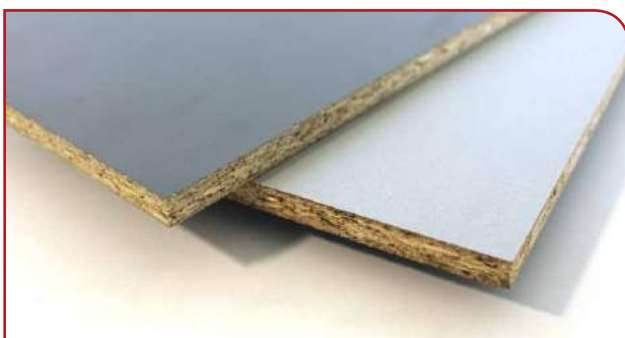
FOAM SHEETS CP 5 and 8



	Dimensions [mm]	Part number
CP 8, white	2500 x 1220 x 8	209001 0202
CP 5, red	2500 x 1220 x 5	209001 0203

- Foam sheets 5 and 8 mm (with protective foil on both sides)
- Colour: white and red, printable
- Dimensions L 2500 x W 1220 mm
- Weight: approx. 4.8 kg/m²


DECORATIVE PLATES DP 8



	Dimensions [mm]	Part number
DP 8 white aluminium / volcanic grey	2655 x 2100 x 8	209001 0201

- Melamine resin panels 8 mm
- volcanic grey / white aluminium
- Dimensions L 2655 x W 2100 mm
- Weight: approx. 6 kg/m²

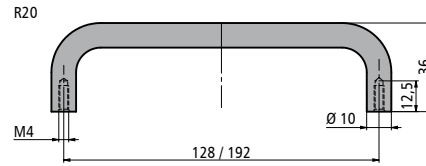
EG 10



EG 10-1
EG 10-2


Minimum order quantity
10 PU

	Packaging unit [PU]	Part number/PU
EG 10-1	2	209001 0064
EG 10-2	2	209001 0065



- Brushed stainless steel handles Ø 10 mm incl. fixing screws
- Thread: M4; thread pitch: 128 mm or 192 mm
- Height: 35 mm; total length: 138 mm or 202 mm
- Connection diameter: 10 mm

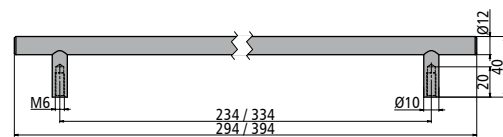
EG 12



EG 12-1
EG 12-2

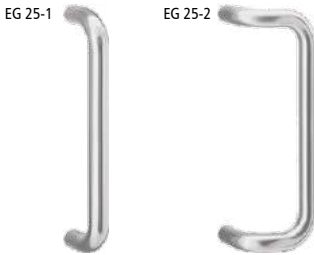
Minimum order quantity
5 PU

	Packaging unit [PU]	Part number/PU
EG 12-1	2	209001 0066
EG 12-2	2	209001 0067



- Brushed stainless steel handles Ø 12 mm incl. fixing screws
- Thread: M6; thread pitch: 234 mm or 334 mm
- Height: 40 mm; total length: 294 mm or 394 mm
- Connection diameter: 9.75 mm

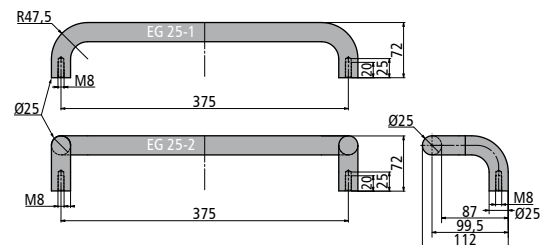
EG 25



EG 25-1
EG 25-2

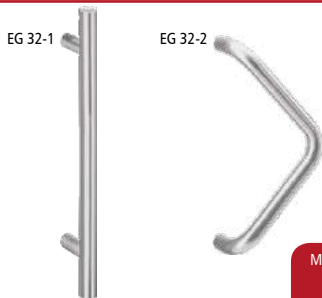
Minimum order quantity
1 PU

	Packaging unit [PU]	Part number/PU
EG 25-1	1 set (le + ri)	209001 0068
EG 25-2	1 set (le + ri)	209001 0069



- Brushed stainless steel handles Ø 25 mm incl. fixing screws
- Thread: M8; thread pitch: 375 mm
- Height: 72 mm; total length: 400 mm
- Connection diameter: 25 mm

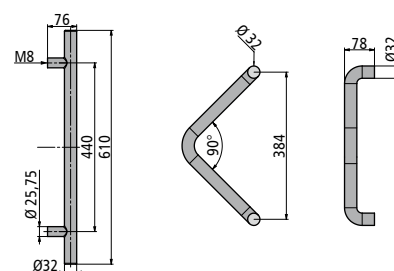
EG 32



EG 32-1
EG 32-2

Minimum order quantity
1 PU

	Packaging unit [PU]	Part number/PU
EG 32-1	1 set (le + ri)	209001 0070
EG 32-2	1 set (le + ri)	209001 0071



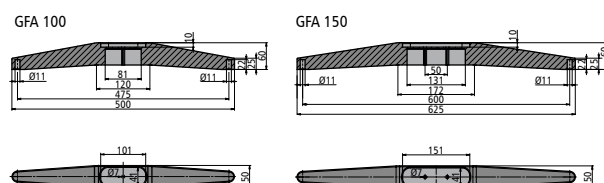
- Brushed stainless steel handles Ø 32 mm incl. fixing screws
- Thread: M8; thread pitch: 440 mm or 384 mm
- Height: 76 mm or 78 mm. total length: 610 mm or 420 mm
- Connection diameter: 25.25 mm or 32 mm



GFA 100, 150 – chrome and grey



	Packaging unit [PU]	Weight	Part no./PU
GFA 100, RAL 9006	2	0.69 kg	442077
GFA 100, chrome	2	0.69 kg	442078
GFA 150, chrome	1	0.86 kg	442078 0002

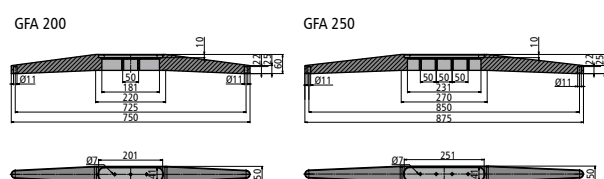


- Die cast aluminium feet, polished chrome or RAL 9006
- Length 500 / 625 mm, width 50 mm with holes Ø 7 mm
- Hole Ø 11 mm for pluggable castors and base
- Vertical stand shape for PV 100 and PV 150

GFA 200, 250 - chrome



	Weight	Part no./unit
GFA 200, chrome	1.03 kg	442078 0001
GFA 250, chrome	1.16 kg	442078 0003



- Die cast aluminium feet, polished chrome
- Length 750 / 875 mm, width 50 mm with holes Ø 7 mm
- Hole Ø 11 mm for pluggable castors and base
- Vertical stand shape for PV 200 and PV 250

CASTORS LRS 50 and LRS 75, pluggable



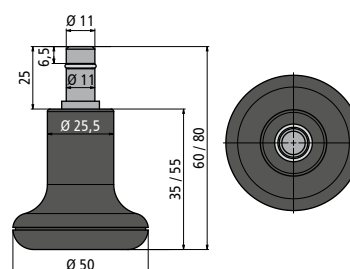
	[PU]	Load capacity [kg]	Diameter [mm]	Part no./PU
LRS 50 without brake	20	approx. 45	Ø 50	609048 0010
LRS 50 with brake	20			609048 0011
LRS 75 without brake	20	approx. 60	Ø 75	609048 0002
LRS 75 with brake	20			609048 0003

- Plastic castors, grey/black
- Pluggable fastening Ø 11 mm
- Castors Ø 50 and 75 mm with soft PVC
- With and without locking brake

FLOOR GLIDES BG 50, plug-in

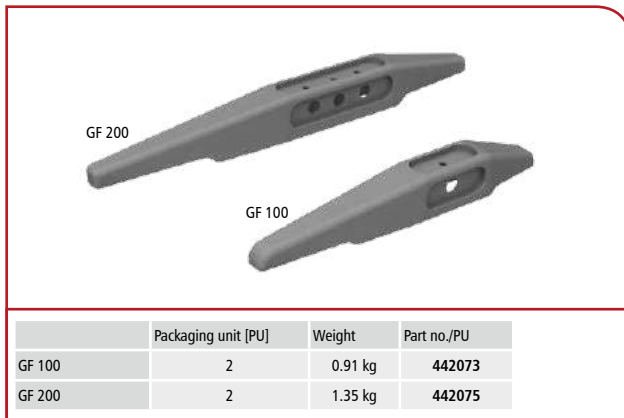


	Diameter [mm]	Height [mm]	Part no./1 unit
BG 50, short	Ø 50	60	209001 0217
	Diameter [mm]	Height [mm]	Part no./4 unit
BG 50, high	Ø 50	80	609035 0002

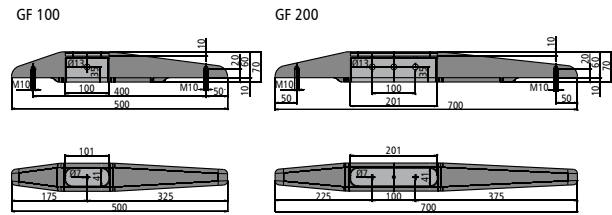


- Floor glides with D11 locking pins galvanised steel
- Secure standing position for office chairs and tables
- Plastic foot suitable for all floors
- Can be changed quickly thanks to plug connection

GF 100 and GF 200, grey

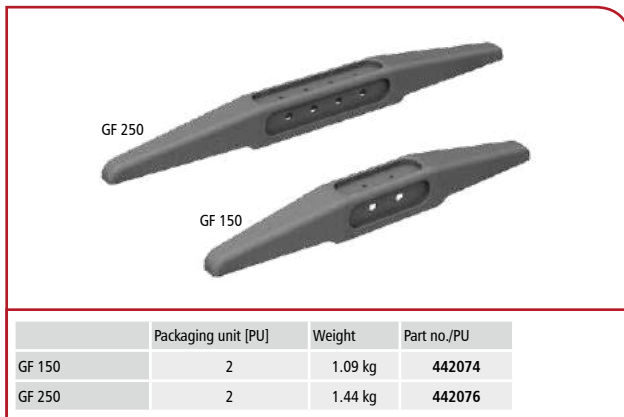


	Packaging unit [PU]	Weight	Part no./PU
GF 100	2	0.91 kg	442073
GF 200	2	1.35 kg	442075

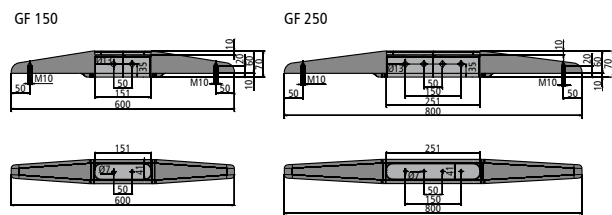


- Die cast aluminium feet, grey aluminium (RAL 9007)
- Length 500 / 700 mm, width 65 mm with holes
- M10 thread for castors and bases
- Horizontal and vertical fixing for PV 100 and PV 200

GF 150 and GF 250, grey



	Packaging unit [PU]	Weight	Part no./PU
GF 150	2	1.09 kg	442074
GF 250	2	1.44 kg	442076



- Diecast aluminium feet, grey aluminium (RAL 9007)
- Length 600 / 800 mm, width 65 mm with holes
- M10 thread for castors and bases
- Horizontal and vertical fixing for PV 150 and PV 250

CASTORS LRG 75



	[PU]	Load capacity [kg]	Dimensions [mm]	Part no./PU
LRG 75 without brake	4	approx. 60	Ø 75 x H 102 x B 56	209001 0079
LRG 75 with brake	4			209001 0083

- Plastic castors, grey/black
- Fastening screw thread M10
- Castors Ø 75 mm with soft PVC
- With and without locking brake

CASTORS LRG 100



	[PU]	Load capacity [kg]	Dimensions [mm]	Part no./PU
LRG 100 without brake	4	approx. 80	Ø 100 x H 125 x B 56	209001 0081
LRG 100 with brake	4			209001 0085

- Plastic castors, grey/black
- Fastening screw thread M10
- Castors Ø 100 mm with soft PVC
- With and without locking brake



MH 243



	Weight [g]	Swivel radius [mm]	Part no./unit
MH 243	500	78	442047

- Swivelling monitor bracket for 10" to 32" screens
 - Tilt angle -5° to 15°, rotation -5° to 5°
 - 2-hole mounting with plug-in module, max. load: 15 kg
 - Monitor mount VESA 75x75 and 100x100
- Aluminium, silver powder-coated

MH 242



	Weight [g]	Swivel radius [mm]	Part no./unit
MH 242	650	78 – 190	442046

- Swivelling monitor bracket for 10" to 32" screens
 - Tilt angle -5° to 15°, rotation -5° to 5°
 - 2-hole mounting with plug-in module, max. load: 15 kg
 - Monitor mount VESA 75x75 and 100x100
- Aluminium, silver powder-coated

MH 244



	Weight [g]	Swivel radius [mm]	Part no./unit
MH 244	760	78 – 225	442048

- Swivelling monitor bracket for 10" to 32" screens
 - Tilt angle -5° to 15°, rotation -5° to 5°
 - 2-hole mounting with plug-in module, max. load: 15 kg
 - Monitor mount VESA 75x75 and 100x100
- Aluminium, silver powder-coated

MH 241



	Weight [g]	Swivel radius [mm]	Part no./unit
MH 241	900	78 – 330	442045

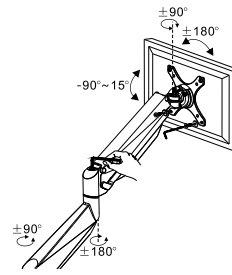
- Swivelling monitor bracket for 10" to 32" screens
 - Tilt angle -5° to 15°, rotation -5° to 5°
 - 2-hole mounting with plug-in module, max. load: 15 kg
 - Monitor mount VESA 75x75 and 100x100
- Aluminium, silver powder-coated



MHT 9 / MHT 20



	Part number
MHT 9	442108
MHT 20	442108 0001

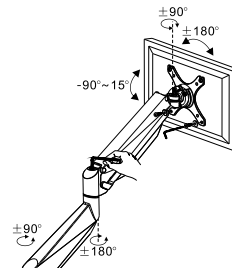


- Swivelling and liftable monitor bracket for monitors up to 42"
- Tilt angle -90° bis 15°, rotation $\pm 180^\circ$
- Table mount, max. load: MHT 9 kg / MHT 20 kg
- Monitor mount VESA 75x75 and 100x100

MHW 9 / MHW 20



	Part number
MHW 9	442107
MHW 20	442107 0001



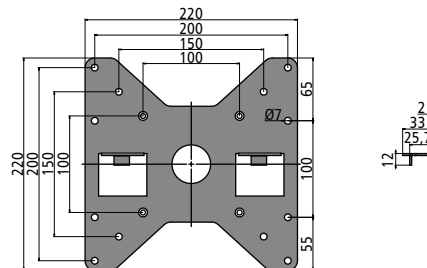
- Swivelling and liftable monitor bracket for monitors up to 42"
- Tilt angle -90° bis 15°, rotation $\pm 180^\circ$
- Table mount, max. load: MHW 9 kg / MHW 20 kg
- Monitor mount VESA 75x75 and 100x100

MOUNTING ANGLE MONITOR, small

Double sided mounting with edging profile PT 4 in standard T-slot



	Part no./unit
MW monitor, small	586400 2839



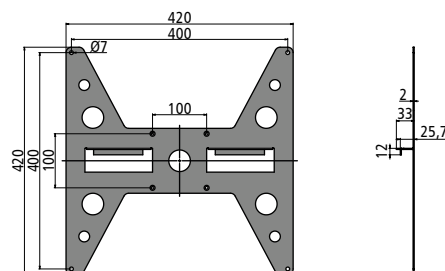
- Monitor mount VESA 100, 150 and 200
- 2 mm steel sheet, powder-coated black
- Can be suspended in PH 50, PV 50-1, PV 100-2, PV 150-3 and PV 200-4
- Suitable for VESA 100 monitor brackets

MOUNTING ANGLE MONITOR, large



Figure without SMART-TV and monitor bracket

	Part no./unit
MW monitor, large	586400 2838



- Monitor mount VESA 100 and 400
- 2 mm steel sheet, powder-coated black
- Can be suspended in PH 50, PV 50-1, PV 100-2, PV 150-3 and PV 200-4
- Suitable for VESA 100 monitor brackets



EXHIBITION KITCHEN WITH COUNTER TOP

The basic thinking behind developing an **exhibition kitchen** was to provide a kitchen for exhibitions, functions and events which feature high transportability, simple installation and simple/easy set-up and dismantling, but does not lose the functionality of a kitchen. By using different aluminium T-slot profiles in connection with hard-wearing melamine panels, the kitchen can vary as much as desired. Adapt to other media content by simply replacing the advertising banners.



Counter top with 3 x 24" monitors and cabinet on castors



CNC MILLING MACHINES

- Space saving and productive
- Set-up in rooms with normal door width
- Solid aluminium construction
- Linear units with steel rail guides and ball screw spindles
- Operation via 10" touch panel
- Processing of plastics, wood, aluminium and non-ferrous metals
- Areas of application: 3D printing, laser, milling and metering technology and much more.

Traversing ranges:

MiniHead X 300 / Y 500 / Z 400 mm

MiniFlat X 300 / Y 600 / Z 200 mm



The **TM 240 torque motors** with direct drive and large hollow shafts are suitable for diverse tasks due to their high torque, extremely stiff holding torque and a resolution of 840,000 incr./turns. Particularly in CNC machines for turning units (4th and 5th axis) in which high stiffness, balance quality and zero backlash are required.





INFO AND STANDING DESK



Info desk set 1:

Standing desk 1 with desk pad, keyboard and mouse, 1-arm monitor bracket, 1 x 24" monitor, mini PC 1, leaflet dispensers DIN long, DIN A5 and business card holders

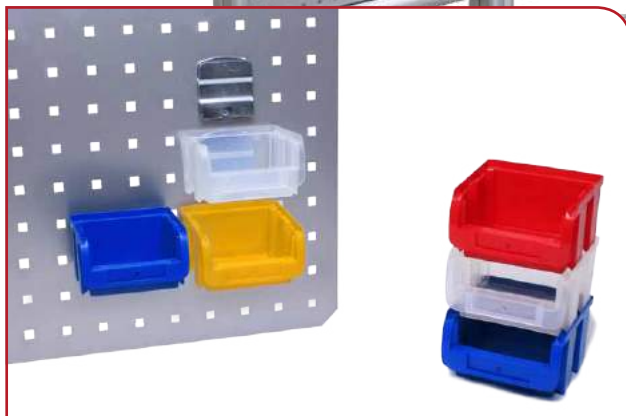
Info desk set 2:

Standing desk 2 with desk pad, mouse and keyboard, 2-arm monitor bracket, 2 x 24" monitor, mini PC 1, leaflet dispensers DIN long, DIN A5 and business card holders



- Anodised aluminium frame made of 4 T-slot profiles, desk height 1050 mm, desk width 800 / 1200 mm
- 2 polished chrome die cast aluminium feet W 50 x L 600 mm with 4 castors Ø 50 mm, 2 with brake
- 1 perforated plate W 450 x L 600/900 x 1.5 mm steel powder-coated grey, raster 38 mm
- Decorative swivel panel, 28 mm thick, two-tone: maple / white aluminium, W 600 x 800 / 1200 mm

SALES AND MAGAZINE RACKS



- Two aluminium base frames in two standard heights L 600 / 900 mm, H 1300 / 1650 mm with die cast feet
- Stand profile with profile covers W 100 mm, H 1200 / 1500 mm Connection profiles W 50 / 100 mm, L 600 / 900 mm
- Fixing profiles L 600 / 900 mm for DIN long / DIN A5 Perforated sheet / slotted sheet 1.5 mm, W 620 / 920 x H 450 mm
- Die cast polished W 50 x H 75 x L 500 mm, with castors Ø 75 mm and supporting feet Ø 50 mm



A

Accessories	23, 24, 25, 26, 27, 28, 29, 30, 31, 32, 33
Acrylic plate glass	34
Acrylic sheets	34
Adjusting angle	27
Adjustment angle	30
Alu-T-Profiles	
Angle profiles	6, 7, 8, 9, 10, 11
Clamping profiles	21
Connection profiles	6, 7, 8, 9, 10, 11
Frame profiles	12, 13, 15
Hollow profiles	19
Mounting profiles	20
Rectangular profiles	14
Slide-in profiles	24
Stand profiles	15, 16, 17, 18
Angle connector	30

C

Castors	36
Ceiling claw	33
Clamping connector	30, 31
Cover profile	6, 7, 12, 13, 16

D

Decorative plates	34
Die cast aluminium feet	36, 37
Die cast feet	36, 37

E

Edging band	25
Edging profile	
Slide-in profile	25

F

Floor glides	36
Foam sheets	30, 32

G

Groove angle	38, 39
--------------	--------

L

Linear guides	36, 37
Locking brake	
Frame feet	24

M

Melamine resin panels	36, 37
Monitor bracket	34
Mounting clip	39
Multi-skin sheets	34

P

Plastic castors	36, 37
-----------------	--------

S

Sheet metal angle	29
Sliding nut	36, 37
Stainless steel handles	35

T

Table connection angle	34
Table mounting angle	26
T-slot cover	31
T-slot covers	31
T-slot nut	25

W

Wire suspension	33
-----------------	----

I. Area of application

1. The following conditions of sale shall apply to all goods delivery contracts concluded between the purchaser and ourselves. The ordering and acceptance of goods delivered by us shall constitute knowledge and/or confirmation of the customer's agreement with our conditions. These conditions shall apply to all future business relations, even where no further agreement has been expressly concluded. Any conflicting conditions on the part of the purchaser that have not been expressly acknowledged by us shall not be binding, even where there have been no express objection to them. Any such conflicting conditions are hereby expressly repudiated in advance. The following sales conditions shall also apply where we implement customer orders in the knowledge that conflicting or diverging conditions stipulated by the purchaser exist.
2. Any agreement, alteration or arrangement shall be made in writing.
3. Any agreements made between ourselves and the customer and relating to the purchasing contracts shall be confirmed in writing.
4. These General Terms and Conditions and the contractual relationship between our company and Seller shall be subject to the law of the Federal Republic of Germany; the international harmonised law, in particular the United Nations Convention on Contracts for the International Sale of Goods (CISG), shall be excluded.
5. In the case where Seller, in terms of the HGB [Handelsgesetzbuch – German Commercial Code], is a body corporate under public law or a public-law special fund, the exclusive place of jurisdiction – also on an international level – for all legal disputes resulting from this contractual relationship shall be at our registered office in Fulda. This shall be applicable accordingly in the case where Seller is an entrepreneur in terms of section 14 HGB [Bürgerliches Gesetzbuch – German Civil Code]. However, we shall in each case have the right to institute legal proceedings at the place of fulfilment with respect to the delivery obligations on the basis of these General Terms and Conditions of Purchase and/or on the basis of prevailing individual agreements or at a general place of jurisdiction of Seller. Prevailing legal provisions, in particular those relating to exclusive competence, shall not be affected by this.

II. Quotation and conclusion of contract

1. Purchasing contracts shall be concluded on the basis of a customer purchase order. The acceptance of a purchase order shall be confirmed either by the forwarding of an order confirmation document to the customer or by the delivery of the goods ordered, within a period of two weeks in both cases.
2. Our offers are subject to change and are non-binding, unless expressly stated otherwise. The scope of our responsibilities is established exclusively in our written order confirmation document.
3. Any drawings or illustrations included in our quotation or order confirmation documentation and any information issued with respect to weights or dimensions shall be understood as approximate, unless stated to the contrary.
4. All drawings, illustrations, calculations and other documents, materials, models, patterns and specifications are subject to property, copyright and other trade mark rights. These must be treated as confidential and may not be transferred to any third party without our written permission, irrespective of whether they are accompanied by any comment to that effect.
5. We accept no liability for any printing or calculation errors appearing in our literature or order confirmation and we shall entertain no claims for damages linked thereto.
6. We reserve the right to make any necessary changes in product construction, technical specifications and performance features, provided they constitute a technical improvement.

III. Prices and payment condition

- 1 Our prices are based on CIP clause of the Incoterms 2010 of the ICC (carriage and insurance paid to the agreed place of destination in accordance with Point V.1. of these Terms and Conditions) including standard packaging and excluding VAT. Our calculations are made on the day on which the invoice is issued and are shown on the invoice.
- 2 Delivery shall be made following advance payment of invoice in „Euros“.
- 3 All orders are based on the prices and price reductions valid at the time of delivery. Discounts shall only apply whereby an agreement to that effect has been made between ourselves and the purchaser. This is a written agreement, which shall also be shown in our order confirmation document.
- 4 Payment on delivery terms must be expressly agreed in advance. The purchase price is shown as net (with no deduction) with immediate payment by the purchaser following receipt of invoice, provided no other payment arrangements are shown in the order confirmation document. Payment is deemed to be fulfilled when we have access to the funds transferred. Payment by cheque is deemed to be fulfilled once the cheque is cleared and the funds have been transferred to us as credit. We are not bound to accept bills of exchange.
- 5 Legal provisions shall apply if a purchaser falls into payment arrears.
- 6 All claims against the purchaser shall immediately become due if the purchaser fails to make a payment on time, breaches any other agreement made with us, or where we have reason to doubt his creditworthiness. We shall also be entitled in such cases to withhold any outstanding deliveries until such time as payment of satisfactory payment assurance has been received, even where agreement has been previously made to the contrary. Following the setting of an appropriate period, we shall also be entitled to refuse to withdraw from the contract and/or to seek damages due to non-fulfilment of contract. We shall also be entitled to waive the purchaser's right to dispose of any goods delivered and, subject to retention of title, to demand their return or transfer at the purchaser's expense and direct debit authorization shall be revoked.
- 7 The purchaser shall only be entitled to compensation, even where notification of defect or counter claim has been made, where such claims are legally binding, are acknowledged by us or are undisputed. The purchaser shall only be entitled to withhold payment if his counter claims relate to the same contractual relationship.

IV. Delivery and delivery times

1. Delivery dates or periods shall be understood as non-binding provided no express agreement to the contrary has been made. The delivery times specified by us shall only commence once all relevant technical and implementation issues have been resolved.
2. The purchaser shall be obliged to implement all necessary requirements correctly and promptly. The agreed delivery period shall be extended - provided our rights have not been infringed by any purchaser payment default - by a period of time if a payment default by the purchaser has on the given (or any other) account. This shall also apply when a fixed delivery date has been agreed.
3. In the case of purchase contracts based on fixed date delivery as stipulated in Art. 286 Para. 2 No. 4 of the German Civil Code or Art. 376 of the German Commercial Code, we accept liability in accordance with current statutory provisions. The same shall apply where the purchaser, following delayed delivery for which we are responsible, is entitled to discontinue his interest in the further fulfilment of the contract. In this case, our liability shall be limited to foreseeable, typically-occurring damage. No liability limitations shall apply where delayed delivery is related to any breach of contractual conditions caused by our representatives or agents.
4. We also accept liability in accordance with current statutory provisions for any negligence in respect of contractual conditions caused by our representatives or agents. Where delayed delivery is not related to any breach of contractual conditions, our liability shall be limited to foreseeable, typically-occurring damage.
4. Where delayed delivery relates to a breach of contractual conditions caused by our representatives or agents, we accept liability in accordance with current statutory provisions, provided that compensation liability is restricted to foreseeable, typically-occurring damage.
5. In the event of delayed delivery for which we are responsible, the purchaser shall be entitled, for each full week of non-delivery, to a one-off compensation payment of 0.5% of the value of the delivery (valid to a maximum of 5 %).
6. We shall accept no additional liability for delay in delivery. Any further legal claims or purchaser rights above and beyond those relating to damage compensation and made in respect of delays in delivery for which we are responsible shall remain unaffected.
7. We shall be entitled to make partial delivery at any time, provided this is acceptable to the customer.
8. Delivery times are considered as fulfilled if the goods have been dispatched from our factory on time.
9. Under the onset of any conditions beyond our control, we shall be entitled to reschedule delivery or retire from any delivery contract, non-fulfilment notwithstanding. Conditions beyond our control shall be taken to mean strikes, lock-outs or any other conditions that hinder delivery or make delivery impossible, irrespective of whether the said conditions affect us directly or affect our suppliers. The purchaser shall be entitled to receive a declaration from us, as to whether we continue to deliver within a set period or retire from the delivery contract. In the absence of any such declaration, the purchaser himself shall be entitled to withdraw from the contract.
10. In the event of delays in acceptance on the part of the purchaser, we shall be entitled to claim compensation for any damage incurred and any additional expenditure. The same shall apply where the purchaser culpably infringes any obligation to cooperate. In the event of delays in acceptance and default behaviour, the risk of accidental deterioration or loss of the goods shall transfer to the purchaser.

V. Transfer of risk - shipment/packaging - delivery

- 1 If delivery is made under clause CIP according to Incoterm 2010 the ICC, then:
 - Standard deliveries nationally and Community countries to agreed delivery address (destination)
 - Standard deliveries to third countries to import-seaport as agreed destination
 We reserve the right to make a surcharge for express shipment and shipment by air. Airfreight to third countries is still with costs. For parts with overseas length from 6m, width 2.4m and height 2.3m (including packaging) delivery shall be ex works additional packaging
2. The risk is transferred to the customer with the delivery of the goods to the first forwarding agent or carrier, at the latest however on leaving the factory or warehouse.
3. With regard to deliveries involving goods to be installed or assembled at the purchaser's premises, risk shall transfer on the day on which the goods are commissioned into use, or at the end of a given trial period where the said period has been agreed beforehand. In the event of any delay occurring during shipment or delivery to the purchaser, any delay in the commencement or implementation of installation or assembly, any delay in commissioning or testing at the purchaser's premises or, where any delays occur for whatever reason in the acceptance of the goods by the purchaser, risk shall be considered to have already transferred to the purchaser at the moment the goods were made available to him.
4. In accordance with packaging regulations and with the exception of pallets, we will not accept the return of any packaging used for transportation or any other purpose. The purchaser shall be responsible for the proper disposal of any packaging delivered.
5. Where shipment is delayed at the request of the purchaser, or occurs due to his negligence, any subsequent warehousing costs and risks shall be the responsibility of the purchaser. The same shall apply in the case of notification of readiness for shipment.
6. With regard to the delivery of customer orders, the minimum order values shall be 100 EUROS (domestic) and 250 EUROS (abroad). These costs do not include VAT. The preparation costs for small deliveries below the minimum value for delivery within Germany shall be 50 EUROS (excluding VAT). These costs do not include postage and packing. We are unable to ship orders below the above-stated minimum value to addresses outside Germany.

7. Special orders, including goods ordered in quantities or with dimensions not stated in our catalogue, must be made in writing by the purchaser. Such orders may be subject to an agreed advance payment. Where one-off production orders in very large quantities are accepted by us, we reserve the right to deliver the goods with an appropriate quantity margin (normally $\pm 10\%$). Packaging charges are, as a general rule, calculated in accordance with manufacturing costs.

VI. Guarantee / liability

1. In contractual relationships with registered traders, we guarantee our products defect free for a period of one year from arriving at the place of destination in accordance with V.1 of these Terms.
2. Milling spindles and other consumables are guaranteed defect free for a period of 6 months. This 6-month guarantee period also applies to milling spindles already integrated into machine systems.
3. The technical advice we give is based on the best of our knowledge. However, we accept no liability for any information relating to the suitability and application of our goods and the purchaser is not exempt from the responsibility of conducting his own calculations, tests and trials. The purchaser shall be solely responsible for complying with any statutory provisions and regulations applying to the use of the goods. Liability with regard to the suitability of our goods for any given application shall only be accepted where previously expressed in writing.
4. We accept liability for material defects, excluding any further claims - subject to the following provisions and those given under VIII. and IX. - as follows:
 5. Any claims relating to defects submitted by the purchaser as registered trader shall only be upheld if the purchaser has properly carried out the necessary inspection and has fulfilled notification obligations in accordance with Article 377 of the German Commercial Code. Other purchasers shall forward their complaints to us in writing within 10 days of receipt of the goods. With regard to business with non-trade personnel, this shall only apply where the defects are apparent. Complaints shall only be considered where the goods are still in „as delivered“ condition.
 6. With regard to justified complaints relating to defects we shall be entitled, in excluding purchaser rights, to withdraw from the contract, to reduce the sales price or to honour our supplementary performance obligations unless, in accordance with statutory provisions, we are justified in refusing to honour our supplementary performance obligations. The purchaser shall allow us a reasonable period in which to provide supplementary performance. With regard to supplementary performance, we shall be entitled to choose whether to correct the defect (rectification) or deliver replacement goods. If we choose to correct the defect, we shall bear any costs (provided these do not increase) incurred due to the object of agreement being located at a location other than the delivery address. In the event of our failure to provide this supplementary performance, the purchaser shall be entitled to choose either a reduction in the purchase price or withdrawal from the contract. Supplementary performance is deemed to have failed following a second unsuccessful attempt, unless further supplementary performance attempts are appropriate and acceptable to the purchaser on the basis of the object of agreement. Claims for damage compensation under the following conditions and with regard to defects may only be issued by the purchaser after supplementary performance is deemed to have failed. The purchaser's right to claim damage compensation shall remain unaffected under the following conditions:
 7. Goods may only be returned to us with our consent. Goods shall be returned in their original packaging or in packaging of similar value. The purchaser shall bear the full costs of shipment. Compensation shall only be made where the defect complaint is deemed justified. Where the customer allows us to test the goods and a defect is discovered, we accept liability, where no defect is found, we shall be entitled to issue a charge for each component tested.
 8. Warranty claims may be lodged by the purchaser up to one year after the goods are delivered, except in the case where we have knowingly hidden the fault, whereby statutory provisions shall apply. Our responsibilities, as stipulated in Section VI, 9 and Section VI, 10, shall in this case remain unaffected.
 9. We are required in accordance with current legal provisions to accept the return of new goods delivered or to reduce the purchase price without the setting of any requisite period if the purchaser's customer, as the end user of the new goods (sale of consumer goods), demands the return of the goods or a price reduction from the purchaser due to a defect or asserts a claim for recourse against the purchaser. In this case, we shall also be liable for compensating the purchaser's expenses, including transportation, travel, labour and material, incurred with respect to the end user due to the replacement of the defective goods on the basis of transfer of risk from us to the purchaser. No claim made by the purchaser with regard to defect shall be supported, where the purchaser has failed to carry out the inspection and to fulfil notification obligations in accordance with Article 377 of the German Commercial Code.
 10. No liability under Section VI, 9 shall be accepted where the defect relates to any advertising slogan or any contractual agreements not originating with us, or where the purchaser himself affords the end user any special guarantees. Liability shall also be denied where, based on statutory provisions, the purchaser himself has no warranty obligations in respect of the end user or where the complaints have not been made in respect of any claim made by him. The above shall also apply, where the purchaser has afforded the end user guarantees above and beyond the legal limit.
 11. We shall be liable, independent of the following liability limitations and in accordance with the statutory provisions covering loss of life, bodily injury and damage to health caused by the deliberate or negligent actions of ourselves, our legal representatives or our agents, as well as for any damage covered by the German Product Liability Act. We shall be liable in accordance with statutory provisions for any damage not included in Clause 1 caused by the deliberate act, gross negligence or by any breach of contract committed by our legal representatives or our agents. In this case, compensation liability shall be limited to foreseeable, typically-occurring damage, in so far as we, our legal representatives and our agents are not deemed to have acted wilfully. We shall also be liable in the context of this warranty and in respect of the goods or their components for the properties and/or life span guarantees we have given. We shall only be liable for damage relating to defects affecting the guaranteed quality or life span, but not directly relating to the goods themselves, where the risk of such damage is apparent from the quality and life span warranty.
 12. No claim for material damage will be accepted without examination of the claims made; this shall apply in particular to lost claims or claims for the compensation of wasted expenses in lieu of performance; our liability as stipulated in Section IV, 6 - Section 6, 10 of this contract shall remain unaffected. Where our liability is limited or excluded, the same shall also apply to that of our employees, sub-contractors, representatives and agents.
 13. Purchaser claims for defect damage compensation shall lapse one year after initial delivery of the goods. This shall not apply where we, our legal representatives or our agents are responsible for loss of life, bodily injury or damage to health or where we or our legal representatives have acted wilfully or with gross negligence or where we have acted fraudulently.
 14. In general, we accept no liability for any damage resulting from the following: incorrect or inappropriate use or storage, faulty installation by the customer or by any third party, damage resulting from the customer's own attempts at servicing or modification, natural instances of wear, faulty or negligent handling, chemical attack, electrical faults, etc. over which we have no control, or damage resulting from improper use or the failure to comply with operating instructions or information sheets. Furthermore, our warranty conditions shall not apply where the customer or a third party makes any modification without prior written approval from us and without justification. Any delay on our part in the removal of defects, especially where such modifications relate to controls / software and even where the fault appears in an unmodified component.
 15. In the event that use of the delivered goods infringes German Copyright or Trade Mark Law, we will bear the costs of either providing the customer with the respective rights or of modifying the goods in a way acceptable to the customer, such that no further breach of copyright law exists. Where it is not possible to restore appropriate commercial conditions within an acceptable period, the customer shall be entitled to withdraw from the contract. Under these conditions, we also reserve the right to withdraw from the said contractual obligations. In addition thereto, we will exempt the customer from any incontestable or legally established claim modifications.
 16. Our acceptance of liability shall be subject to current statutory provisions governing liability for infringements of copyright and trade mark law. Any liability under Article 15 shall only be accepted by us provided the customer immediately notifies us of the infringement of any copyright or trade mark law, provided he supports us to a reasonable extent in the defence of any claims made or allows us to make any relevant modification, provided all defensive measures, including extra-judicial provisions, are available to us, provided not based on the customer's modification and where there has been no breach of the law and provided the customer has made no instruction to the delivered goods or used them in any way contrary to the provisions of the contract.

VII. Repairs and the return of goods

1. When requested, the purchaser shall be provided with cost estimates prior to any repair being undertaken. All costs relating to shipment and packaging shall be borne by the purchaser. Invoices for repair work shall be paid in full, with no deductions and immediately upon receipt. All repairs, including those made under warranty shall, under normal circumstances, be carried out in our repair facility, unless agreed to the contrary in writing.
2. Delivered goods will only be taken back with our consent and once any relevant fees have been agreed. Under normal circumstances, we will not accept the return of any specially-prepared goods or software!
3. Goods dispatched or returned must always be accompanied by delivery documents or copies of invoice. The costs of returning goods shall be borne by the purchaser under „free to door“ conditions.

VIII. Assembly

1. Installation work will be charged separately unless agreed to the contrary in writing. Installation costs shall include travel costs and accommodation allowances, as well as the normal rates of payment for the work including supplements for overtime, night work, work carried out on Sundays and holidays and work carried out under difficult conditions, as well as for planning and commissioning.
2. We shall invoice for all costs incurred in respect of preparatory work, travel, waiting times and commuting time. The customer shall compensate us for any further waiting time, travelling time and travelling costs incurred due to any delay in the starting or final commissioning of the said works, where the causes of such delays are beyond our control.
3. The customer shall bear all costs relating to the provision of any necessary auxiliary personnel and shall ensure that any tools needed are available in the required quantities. The customer shall also ensure the provision of suitably-sized, dry premises for the storage of machinery parts, apparatus, materials, tools, etc. The customer shall take appropriate measures to protect our property and that of our service personnel, equal to those he would take for the protection of his own property. Where the customer's operating conditions require the use of special clothing or protective equipment, he shall ensure that these are made available to our service personnel.
4. Our service personnel and auxiliary staff shall not be required to undertake any tasks directly related to the implementation of our delivery and installation duties, unless prior agreement has been reached with us. Where such tasks are agreed, we accept no liability for any works

implemented by our personnel beyond the scope of our contractual responsibilities. Any installation works carried out by the customer, or by any third party commissioned by him, must meet our current operating and installation requirements.

IX. Software, software use and additional guarantee and defect claims

1. With regard to any software supplied by us and all documentation belonging thereto, the customer shall be provided, in return for payment, with a non-expiring, non-exclusive, non-transferable user rights on an established or, in certain cases, yet to be specified hardware product. We shall remain the owner of the copyright and all associated trade marks. Any entitlement to produce copies shall be granted solely for the purposes of securing data. Copyright information must not be removed.
2. Instructions for installation and commissioning shall be supplied by us in a printed format together with safety advice relating to your software. All other documentation shall be supplied exclusively by us, in a software data format. Following the release of new software, all necessary software data relevant to the release will be sent together with the new software. Furthermore, we reserve the right to deliver such documentation in the form of online help or online documentation.
3. Transfer to any third party may only be effected subject to our prior written consent. Acknowledgement of this condition must be obtained prior to the transfer of software to a third party. No modifications shall be permitted.
4. Each and every infringement of these provisions shall be subject to a penalty amounting to 10 times the total value of the customer order. Any entitlement to further claims for compensation shall remain unaffected. Contractual penalties shall be levied separately and in addition to any potential further claims for damage compensation. The customer shall be entitled to provide evidence in support of any claim of reduced or negligible damage. The software and all documentation belonging thereto shall, in this case, be returned to us.
5. These conditions shall not apply to exclusive, customer-specific software developed and provided to meet individual customer requirements. Under the contract-related provision of control software, developed by us using modular multi-application software components (standard software modules), these are to be fitted and adapted in accordance with customer-specific and contractual performance requirements (customer-specific applications program).
6. On payment of the full purchase price for the customer-specific application program, we shall provide the customer with exclusive, spatially- and temporally-unrestricted user rights. The customer will not be afforded any rights with regard to the standard software module on which the customer-specific adaptations are based, irrespective of the type of module.
7. We shall be entitled, irrespective of these provisions and on the basis of other customer orders, to prepare and offer for sale the resulting customer-specific software solutions developed. We shall in each and every case retain non-exclusive user rights to customer-specific solutions for internal operational purposes.
8. Subject to the provisions in VI, we undertake the guarantee for the correct duplication of our software. Our software is designed to run on hardware products specified by us. Our warranty obligations shall not be affected by the delivery of replacement parts. We undertake no guarantee for the fault-free operation of the software or its data structure, unless we have agreed to the contrary in writing. Regarding customer-specific software, we guarantee compliance with the specific function and performance features outlined in the operational specifications, the order confirmation document and the established function / operating sequence documentation. We accept no liability for the fault-free functioning of programs in all the customer's planned applications and, in particular, with regard to any applications not mentioned or tested at the time of program creation / acceptance.

X. Retention of title

1. The goods delivered (goods subject to the retention of title) shall remain our property until such time as all debts, including all current account balance claims, accrued by the purchaser both now and in the future, have been paid in full. In the event of any infringement of contractual conditions on the part of the purchaser, e.g. payment arrears, we shall be entitled, after setting and upon culmination of a reasonable period, to repossess goods subject to the retention of title. The repossession of goods subject to the retention of title shall constitute our withdrawal from the contract. The seizure of goods subject to the retention of title by us shall constitute our withdrawal from the contract. Following repossession, we shall be entitled to dispose of goods subject to the retention of title. Following the deduction of an appropriate amount for the costs of the disposal, the proceeds from the disposal shall be deducted from the outstanding amounts owed to us by the purchaser.
2. The purchaser shall be responsible for the proper handling of goods subject to the retention of title and shall insure these at his own expense to their full value against damage by fire, water and theft. The costs of inspecting and servicing the goods at their appropriate intervals shall be borne by the purchaser.
3. The purchaser shall be entitled to use and/or dispose of goods subject to the retention of title in the course of his normal business activities, provided he is not in payment arrears. Pawning or chattel mortgaging shall not be permitted. Any existing claims (including all current account balance claims) with respect to goods subject to the retention of title arising due to resale or for other legal reasons (insurance, tort) shall be assigned by the purchaser by way of security and in their entirety to us; we hereby accept assignment. The purchaser has our (revocable) authorisation to collect the claims assigned to us for his invoices in his own name. We reserve the right to revoke authorisation at any time, should the purchaser not be able to meet his payment obligations. The purchaser shall not be entitled to assign the claim even for the purposes of collecting the debts by way of factoring, unless an obligation is simultaneously imposed on the factor to transfer the collected amounts directly to us, provided we still have outstanding claims against the purchaser.
4. Any processing or modification of goods subject to the retention of title shall be carried out on our behalf. Where goods subject to the retention of title are modified using items not belonging to us, we shall become co-owners of the new commodity in the ratio of the value of the goods subject to the retention of title (total amount of invoices including VAT) to the other items used, at the time of modification. The same shall apply to the processing of new products created as appies to goods subject to the retention of title. In the case of an inseparable mix of goods subject to retention of title and items not belonging to us, we shall become co-owners of the new commodity in the ratio of the value of the goods subject to retention of title (total amount of invoice including VAT) to the other items used, at the time of creation of the mix. Where the purchaser's item is the major component of the mix, the purchaser shall agree to assign co-ownership to us on a proportional basis; we hereby accept the assignment. The purchaser shall ensure that a record of sale- and co-ownership on a single item is kept on our behalf.
5. Where a third party gains access to goods subject to retention of title and in particular to pledged goods, the purchaser shall provide notification of our ownership and shall notify us immediately, so that we can assert our rights of ownership. Where the third party is unable to compensate us for the in-court and out-of-court costs incurred in respect thereof, liability shall fall to the purchaser.
6. We undertake to release the securities due to us in so far as their value exceeds the claims to be secured by more than 10%, the choice being ours as to which securities to release.

XI. Applicable law, court of jurisdiction and location

1. All legal relationships between the parties are exclusively subject to German law, to the exclusion of the United Nations Convention on Contracts for the International Sales of Goods, even if the buyer has its usual place of residence or abode abroad or delivery is being made abroad. The same applies if the buyer transfers their usual residence to another country at a later time or is unavailable.
2. If you do not have a place of residency in Germany at the time of ordering or you move your place of residence to another country following the conclusion of the contract or your place of residency is not known at the time that a claim is made, legal jurisdiction for all disputes arising from and in relation to the contractual relationship is Fulda.
3. If the customer is a merchant under the provisions of paragraph 1 section 1 of the Commercial Code (Handelsgesetzbuch, HGB), a legal person under public law or a special fund under public law, the courts in Fulda will be exclusively responsible for all disputes arising from or in connection with the relevant contractual relationship. In all other cases the customer or we are permitted to bring claims before any court that is legally competent.
4. Should individual provisions of this contract be wholly or partly invalid or void then the validity of the rest of the contract will not be affected. The parties undertake to replace the invalid or void provision with a valid provision that is closest to the intended commercial purpose. The same applies in cases of gaps. Changes and amendments to these General Conditions must be agreed in writing. The suspension of this requirement of the written form must also be made in writing.

This contract is executed both in German and in English. In the case of differences between the German and the English version, as well as in the case of legal disputes, the German version shall exclusively be applicable. The parties expressly waive a translation into any other language.

isulGermanyAG

Bürgermeister-Ebert-Straße 40
D-36124 Eichenzell

Stand: 10.12.2015



PROGRAM OF THE **isel**-GROUP

development, production and sales of components and systems
in the sectors
mechanics, electronics, software, systems, display and lifestyle



ASSEMBLY and PRODUCTION TABLES

The modular design of the assembly and production tables with T-groove profiles enables an industry-independent use with many variants. Functionality and flexibility are significantly increased in silver gray or stainless steel finish by the use of punch and gill plates. The optional hood shall provide additional security and standing next to the information desk is used for additional networking.



Clamping connector SV2



Angle connector WV 1



Angle connector WV 2



T-slot nut magnet

iselGermanyAG

a company of the isel group

info@isel.com

www.isel.com/germany

showroom and sales:
Adam-von-Trott-Straße 6/8
13627 Berlin
Tel.: +49 (0) 30 34099-134

online shop and distribution:
Friedländer Weg 37
36132 Eiterfeld
Tel.: +49 (0) 6672 898-600